



REDUCED



Huge plot of agricultural land with water and option to build, Ourique

PLOT IN OURIQUE

ref. **AT2086**
~~700.000€~~
639.866€

558.000m² 

NA

Location +

Town Ourique
 Parish Ourique
 Municipality Ourique, Beja
 Region Alentejo (Central)

Details +

Usage Residential
 Type Plot

Areas +

Plot Area 558.000 m²

Access +

Tarmac, Manual Entrance Gate

- Plot size 558000m²
- Many holm oaks and fertile land
- Water from two wells
- Easy access on a tarmac road
- Electricity and phone lines very close by so will be easy to connect
- 65km to the beach at Vila Nova de Milfontes

This beautiful plot of land in the lower Alentejo is divided into two parts by the road giving the possibility to make two separate plots. Because the land is larger than 5ha the town hall has said that a house could be built if the property was being used for some type of agriculture, keeping sheep or planting produce for example. It is likely also that permission could be obtained to do an agro-tourism project.

There is a well with abundant water on the 11ha part of the plot and another well which gives enough water for a household on the larger plot.

If a new owner wished to separate the two plots, then the possibility is that a house could be built on each one. This must be verified with the town hall.



YOUR PROPERTY SPECIALISTS

Water-Electricity-Drainage +

Mains electric, 2 Wells

Views +

Countryside View, Panoramic View

Extra Features +

Building Plots

The town of Ourique is close by and has restaurants, cafés, shops, supermarkets, banks, post office, church, school, etc.

Amenities

- Wells

Location

4km to Ourique with all amenities
65km to the beach at Vila Nova de Milfontes
190km to Lisbon
100km to Faro airport



Ourique Office - ALENTEJO:

Monte Curral Velho

GPS. 37° 37' 31.41" N - 8° 17' 5.275" W

TogoFor Homes - Sociedade Mediação Imobiliária, LDA | License: AMI 6902

+351 286 094 036

enquiries@togo-for-homes.com

www.togo-for-homes.com



YOUR PROPERTY SPECIALISTS



PHOTO GALLERY



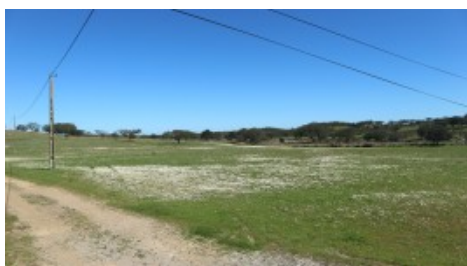
Well



Well



Plots



Power



Stream



Trees



Well



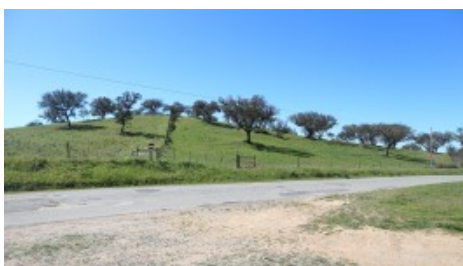
Pasture



Track



Land



Land



Ourique Office - ALENTEJO:
Monte Curral Velho
GPS. 37° 37' 31.41" N - 8° 17' 5.275" W

Togofor Homes - Sociedade Mediação Imobiliária, LDA | License: AMI 6902

+351 286 094 036
enquiries@togofor-homes.com
www.togofor-homes.com