

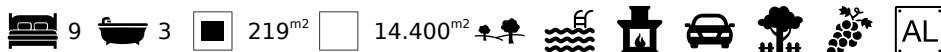


3 cottages with rental license, pool, land and commercial vineyard, near Espiche, West Algarve

GUESTHOUSE IN PRAIA DA LUZ

ref. **LG1100**

1.600.000€



Location +

Town	Praia da Luz
Parish	Luz
Municipality	Lagos, Faro
Region	Algarve (West)

Details +

Usage	Residential
Type	Guesthouse
Construction Year	1980
Renovation Year	2011
Rooms	15
Bedrooms	9
Bathrooms	3
Floors	1
Furnished	Fully

- Operating Business
- Plot 14400m²
- Living area 219m²
- All 3 cottages complete with tourism licenses
- Close to amenities, beach and golf
- Good rental revenues
- Nearest Beach: 1.5km

These properties are located a few kilometres outside of Lagos, a short distance from local shops, golf courses and the coastline along with its beaches.

Each cottage has 3 bedrooms, a bathroom, kitchen and living area as well as carport and storage space. There is also outside space, terracing and a communal swimming pool so that the area can be enjoyed in the holiday season too.

Surrounding the properties are over 14,000m² of land used to cultivate grapes to make regional award-winning wine. This estate can be easily accessed from the main road, and with parking spaces onsite, this would make a perfect commercial rental opportunity.



YOUR PROPERTY SPECIALISTS

Areas +

Living Area	219 m ²
Usable area	291 m ²
Plot Area	14.400 m ²

Access +

Driveway, Country Road

Parking +

Parking outdoors, Carport

Living Room +

Lounge/Dining

Terrace +

Garden Terrace

Kitchen +

Fully Fitted, Partially Equipped

Other Rooms +

Storage

Heating-Cooling System +

Fireplace

Equipment +

Cable/Satellite TV, Internet/Phone

Water-Electricity-Drainage +

Mains drainage, Mains electric,
Mains water, Borehole

Windows +

Manual Shutters/Blinds

Pool +

Private, Lighting

Garden +

Landscaped, Natural, BBQ

Exterior +

Storage Shed

Views +

Countryside View

Amenities

- Mains water and borehole
- Storage
- Carport
- Shutters
- Open fireplace
- Sat-TV and Internet

Location

- Distance to Sea: 1.5km
- Nearest Beach: 1.5km
- Nearest Golf: 2.5km
- Airport: 68km
- Nearest School: 500m
- Nearest major town (Lagos): 5km



Lagos Office - ALGARVE:
Marina de Lagos, Edifício Astrolábio, Lote 24-Loja 5
GPS. 37° 6' 41.85" N - 8° 40' 30.251" W

Togofor Homes - Sociedade Mediação Imobiliária, LDA | License: AMI 6902

+351 282 476 568
enquiries@togofor-homes.com
www.togofor-homes.com



YOUR PROPERTY SPECIALISTS

Extra Features +
Vineyard



Lagos Office - ALGARVE:
Marina de Lagos, Edifício Astrolábio, Lote 24-Loja 5
GPS. 37° 6' 41.85" N - 8° 40' 30.251" W

Togofor Homes - Sociedade Mediação Imobiliária, LDA | License: AMI 6902

+351 282 476 568
enquiries@togofor-homes.com
www.togofor-homes.com



YOUR PROPERTY SPECIALISTS



PHOTO GALLERY



Casa A - Front



Casa A - Lounge



Casa A - Bedroom



Casa A - north terrace



Casa A - south terrace



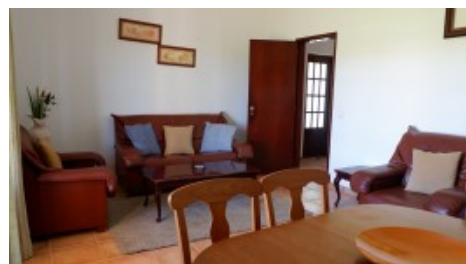
Casa A - Carport



Casa B - Front



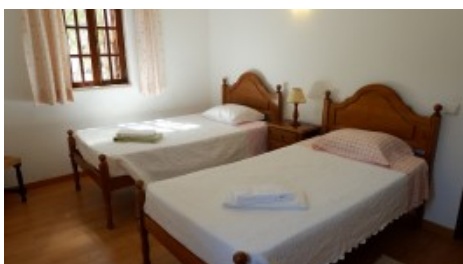
Casa B - Kitchen



Casa B - Lounge



Casa B - Bedroom 1



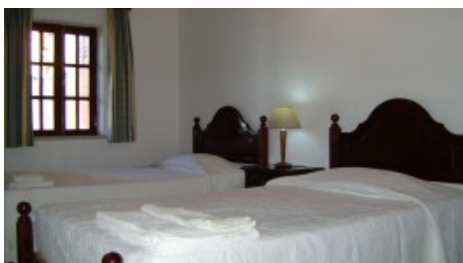
Casa B - Bedroom 2



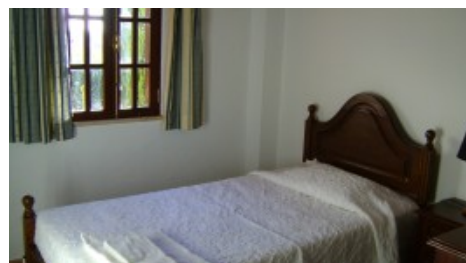
Casa B - Carport



Casa C - Front



Casa C - Double Bedroom



Casa C - Bedroom 2



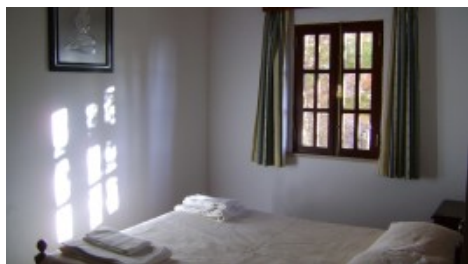
Lagos Office - ALGARVE:
Marina de Lagos, Edifício Astrolábio, Lote 24-Loja 5
GPS. 37° 6' 41.85" N - 8° 40' 30.251" W

Togofor Homes - Sociedade Mediação Imobiliária, LDA | License: AMI 6902

+351 282 476 568
enquiries@togofor-homes.com
www.togofor-homes.com



YOUR PROPERTY SPECIALISTS



Casa C - Bedroom 3



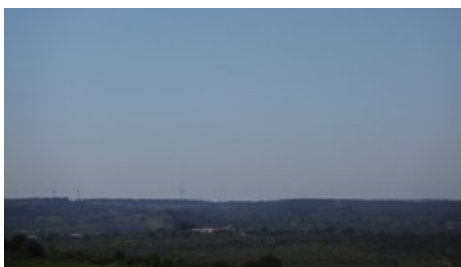
Vineyard



Vineyard



Vineyard



North West view



Storage



Storage



Machine house



Lagos Office - ALGARVE:
Marina de Lagos, Edifício Astrolábio, Lote 24-Loja 5
GPS. 37° 6' 41.85" N - 8° 40' 30.251" W

Togofor Homes - Sociedade Mediação Imobiliária, LDA | License: AMI 6902

+351 282 476 568
enquiries@togofor-homes.com
www.togofor-homes.com