

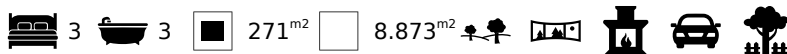


3 Bedroom Country House set Within the Rolling Hills in Silves

VILLA IN SILVES

ref. **LG2227**

6.217.557€



Location +

Town	Silves
Parish	Silves
Municipality	Silves, Faro
Region	Algarve (West)

Details +

Usage	Residential
Type	Villa
Construction Year	1988
Renovation Year	2020
Rooms	6
Bedrooms	3
Bathrooms	3
Floors	1
Furnished	Fully

- Living area 271m², construction area 271m²
- Plot 8.873m²
- 3 Bedrooms, 3 bathrooms
- Construction year 1988
- Fireplace
- Distance from beach 17km

This is an authentic Portuguese style 3-bedroom country house. The interior is finished and furnished bespoke style throughout, with a rustic feel. There is a fantastic terrace with countryside views. It has high ceilings with Eucalyptus beams.

Silves is a typically small town and within the old town boasts an impressive church which is a prominent architectural and spiritual landmark. It has classic white painted buildings and peaceful cafes, with the tranquil views and surrounding hills set in Mediterranean woodlands and scrubs.

The property consists of:

Ground Floor

- Large entrance hall
- Dining room/lounge
- Rustic fully fitted kitchen



YOUR PROPERTY SPECIALISTS

Areas +

Living Area	271 m ²
Usable area	271 m ²
Plot Area	8.873 m ²

Access +

Country Road, Driveway, Manual Entrance Gate

Parking +

Parking outdoors

Living Room +

Lounge, Dining

Terrace +

Terraces

Kitchen +

Open Plan, Fully Fitted

Bedroom +

3, En-Suite

Bathroom +

Family Bathroom

Heating-Cooling System +

Fireplace

Equipment +

Solar (Water)

Water-Electricity-Drainage +

Mains water, Cistern, Mains electric, Septic tank

Windows +

Double glazing

Garden +

Landscaped, Lawn, Trees

Exterior +

Courtyard, BBQ

Views +

- Master bedroom with en-suite bathroom
- Double bedroom
- Single bedroom
- 3 bathrooms
- Living room fireplace (slightly upper level)

External:

- Outdoor parking
- Fully fenced
- Garden shed
- Terrace area
- Pizza oven
- BBQ area
- Trees

Amenities

- Pizza oven
- Mains water
- Mains electric
- Drainage - septic tank
- Fully equipped, fully fitted rustic kitchen
- Fireplace

Location

- 17.1km to the sea
- 9.5km to Silves
- 9.7km to the nearest golf course
- 9.4km to the nearest school
- 56.4km to Faro airport



Lagos Office - ALGARVE:
Marina de Lagos, Edifício Astrolábio, Lote 24-Loja 5
GPS. 37° 6' 41.85" N - 8° 40' 30.251" W

Togofor Homes - Sociedade Mediação Imobiliária, LDA | License: AMI 6902

+351 282 476 568
enquiries@togofor-homes.com
www.togofor-homes.com



YOUR PROPERTY SPECIALISTS

Panoramic View, Countryside View



Lagos Office - ALGARVE:
Marina de Lagos, Edifício Astrolábio, Lote 24-Loja 5
GPS. 37° 6' 41.85" N - 8° 40' 30.251" W

Togofor Homes - Sociedade Mediação Imobiliária, LDA | License: AMI 6902

+351 282 476 568
enquiries@togofor-homes.com
www.togofor-homes.com



YOUR PROPERTY SPECIALISTS



PHOTO GALLERY



Lounge/Dining



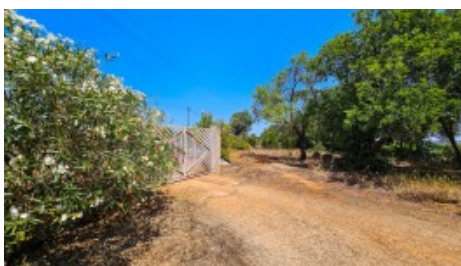
Lounge/Dining



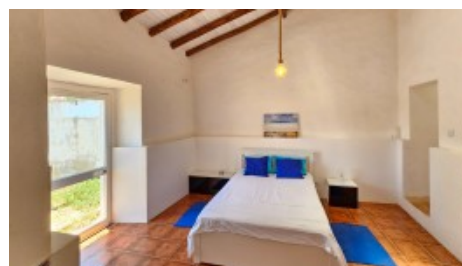
Kitchen



Dining



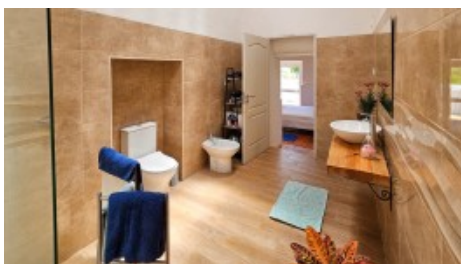
Natural Plot



Bedroom



Bedroom



Bathroom



Bathroom



Bathroom



Lounge



House



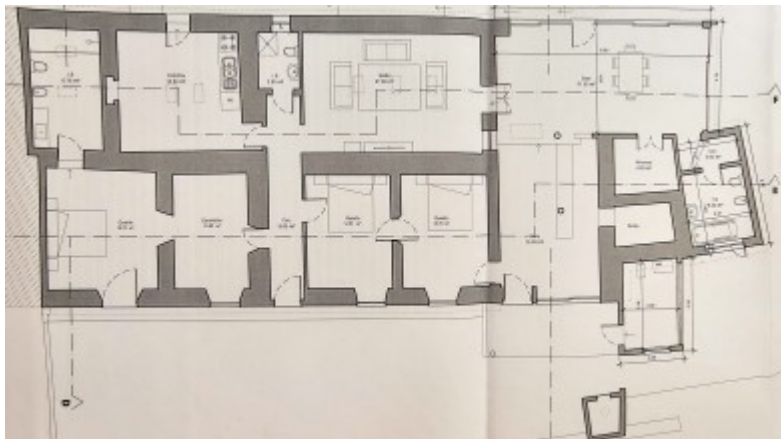
Lagos Office - ALGARVE:
Marina de Lagos, Edifício Astrolábio, Lote 24-Loja 5
GPS. 37° 6' 41.85" N - 8° 40' 30.251" W

Togofor Homes - Sociedade Mediação Imobiliária, LDA | License: AMI 6902

+351 282 476 568
enquiries@togofor-homes.com
www.togofor-homes.com



FLOOR PLANS



LG2227 Floor plans