

Lovingly Restored, Large Historic Townhouse in the Centre of Elvas, Alentejo - Now a Beautiful Guesthouse

TOWNHOUSE IN ELVAS

ref. PDBAG031
680.000€



Location +

Town	Elvas
Parish	Assunção, Ajuda, Salvador e Santo Ildefonso
Municipality	Elvas, Portalegre
Region	Alentejo (North)

- Living area 263m²
- 6 bedrooms, 7 bathrooms
- Renovated in 2019
- Small pool
- In the historical town center
- Parking off road or on near by parking place

The very old building, located in the historical center of Elvas, which had been closed for many years, has been rehabilitated and completely thoroughly renovated.

The original elements of charm were kept as much as possible and others were reproduced giving it comfort and uniqueness. There is a pleasant terrace with a small pool and incredible views on the 3rd floor. This property is perfect for a bigger family or to entertain guests or to rent out.

Ground Floor:

- Kitchen
- Dining room, lounge
- 1 bedroom with bathroom
- 1 bathroom full of original details



YOUR PROPERTY SPECIALISTS

Details +

Usage	Residential
Type	Townhouse
Renovation Year	2019
Rooms	8
Bedrooms	6
Bathrooms	7
Floors	4
Furnished	Partly

Areas +

Living Area	263 m ²
Usable area	263 m ²

Access +

Tarmac

Parking +

Parking outdoors

Living Room +

Lounge

Terrace +

Roof Terrace

Kitchen +

Fully Fitted

Bedroom +

6

Bathroom +

7

Heating-Cooling System +

AC

Water-Electricity-Drainage +

All mains

Pool +

Private

Views +

Town View

1st Floor, accessed by a beautiful old marble staircase:

- 2 bedrooms each with a bathroom.

2nd Floor:

- 3 bedrooms each with a bathroom

3rd Floor:

- A delightful terrace with a small technical support (fridge/dishwasher/area to store outdoor furniture)
- Tank/pool with a magnificent view
- From this terrace, you can access a solarium by an external staircase

Amenities

- Completely new sewerage, water and electricity systems
- Sold furnished
- All rooms have air conditioning
- All bathrooms have their own water heater
- Fully equipped kitchen

Location

- 2 hours to Lisbon by motorway
- 10 minutes to Spain (Badajoz)



Vilamoura Head Office - ALGARVE:

Av. Vilamoura XXI, Sítio das Terras Ruivas, Loja B, Benfarras

GPS. 37° 6' 52.426" N - 8° 7' 4.576" W

Togofor Homes - Sociedade Mediação Imobiliária, LDA | License: AMI 6902

+351 289 322 134

enquiries@togofor-homes.com

www.togofor-homes.com



YOUR PROPERTY SPECIALISTS



Vilamoura Head Office - ALGARVE:
Av. Vilamoura XXI, Sítio das Terras Ruivas, Loja B, Benfarras
GPS. 37° 6' 52.426" N - 8° 7' 4.576" W

Togofor Homes - Sociedade Mediação Imobiliária, LDA | License: **AMI 6902**

+351 289 322 134
enquiries@togofor-homes.com
www.togofor-homes.com



YOUR PROPERTY SPECIALISTS



PHOTO GALLERY



Dining Area



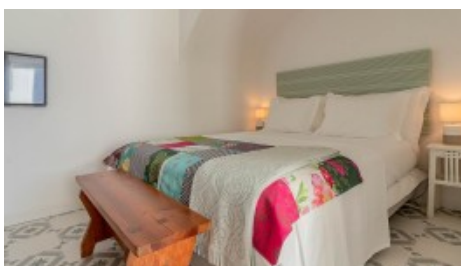
Living Room



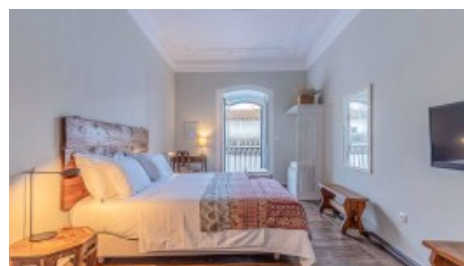
Bedroom



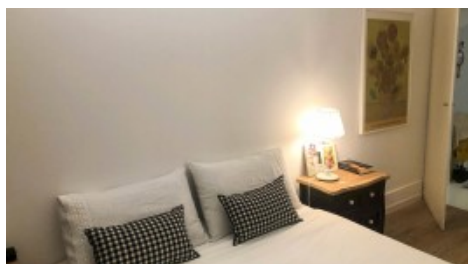
Bathroom



Bedroom



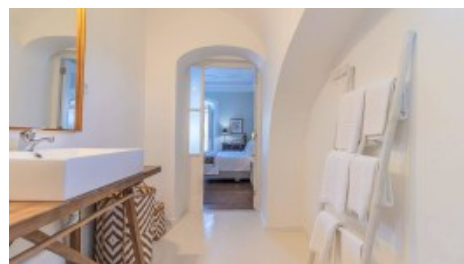
Bedroom



Bedroom



Bedroom



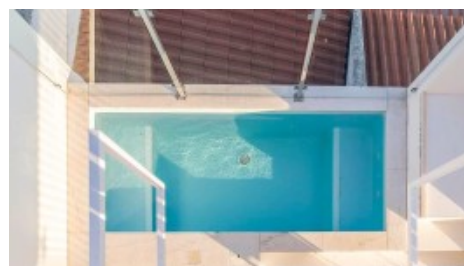
Bathroom



Entrance&Stairwell



Detail



Pool



Vilamoura Head Office - ALGARVE:
Av. Vilamoura XXI, Sítio das Terras Ruivas, Loja B, Benfarras
GPS. 37° 6' 52.426" N - 8° 7' 4.576" W

Togofor Homes - Sociedade Mediação Imobiliária, LDA | License: AMI 6902

+351 289 322 134
enquiries@togo-for-homes.com
www.togo-for-homes.com



YOUR PROPERTY SPECIALISTS



Forte da Graça



Forte da Graça



Aqueduct



Elvas Castle



Vilamoura Head Office - ALGARVE:
Av. Vilamoura XXI, Sítio das Terras Ruivas, Loja B, Benfarras
GPS. 37° 6' 52.426" N - 8° 7' 4.576" W

Togofor Homes - Sociedade Mediação Imobiliária, LDA | License: AMI 6902

+351 289 322 134
enquiries@togofor-homes.com
www.togofor-homes.com