





## South facing ruin with mountain and partial sea views near São Brás

PLOT IN SÃO BRÁS DE ALPORTEL

ref. VM1174  
129.500€

127m<sup>2</sup> 469m<sup>2</sup>  

NA

### Location +

Town	São Brás de Alportel
Parish	São Brás de Alportel
Municipality	São Brás de Alportel, Faro
Region	Algarve (East)

### Details +

Usage	Residential
Type	Plot
Rooms	4
Floors	1

- Plot size 469m<sup>2</sup>
- Current living area 127m<sup>2</sup>
- Electric, water and phone on door step
- Good access
- 7km from São Brás
- Distance to beach 19km

Nicely located south facing plot on raised land, offering open views of countryside and also partial sea views.

This plot sits in an elevated position on the crest of a hill in the quiet hamlet of Desbarato with many other hamlets in the surrounding areas and just 7 km from São Brás. This is a south facing plot offering spectacular rolling views of open countryside from the north and from the south side again country views and also partial sea views.

It is possible to build a single story villa of 300m<sup>2</sup> with a basement and also swimming pool. Power lines, phone and water are a stones throw from the ruin, hence it will be easy to connect any new building. Any new-built here will be private, yet not isolated as there are other houses along the access road and a small hamlet just a few hundred meters away.



YOUR PROPERTY SPECIALISTS

#### Areas +

Living Area 127 m<sup>2</sup>  
Plot Area 469 m<sup>2</sup>

#### Access +

Tarmac

#### Garden +

Fruit Trees

#### Views +

Countryside View

#### Amenities

- Quiet location on cul-de-sac
- Fruit trees , fig, almond, olive, alfarroba , romã
- Close to electricity, water and phone

#### Location

- Distance to sea 14.5 km
- Distance to beach 19km
- Distance to golf 13.8 km
- Distance to school 7 km
- Nearest town São Brás 7km



Tavira Office - ALGARVE:  
Rua da Silva 27 Tavira  
GPS. 37° 7' 27.627" N - 7° 38' 44.156" W

Togofor Homes - Sociedade Mediação Imobiliária, LDA | License: AMI 6902

+351 281 027 570  
enquiries@togofor-homes.com  
[www.togofor-homes.com](http://www.togofor-homes.com)



YOUR PROPERTY SPECIALISTS



## PHOTO GALLERY



*North Views*



*South View over Ruin*



*Ruin*



*Ruin*



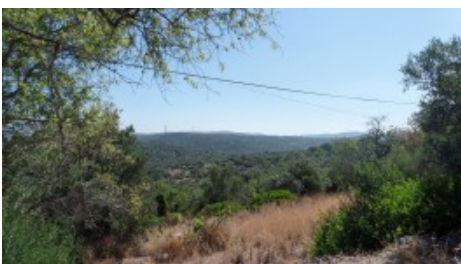
*Ruin*



*South*



*North*



*South West*



Tavira Office - ALGARVE:  
Rua da Silva 27 Tavira  
GPS. 37° 7' 27.627" N - 7° 38' 44.156" W

Togofor Homes - Sociedade Mediação Imobiliária, LDA | License: AMI 6902

+351 281 027 570  
enquiries@togofor-homes.com  
[www.togofor-homes.com](http://www.togofor-homes.com)



## FLOOR PLANS

