




## Large Plot with Approved Hotel Project in Vale Parra, Albufeira

PLOT IN GUIA

ref. VM1993

136.137.838€

101.520m<sup>2</sup> 

B

### Location +

Town	Guia
Parish	Guia
Municipality	Albufeira, Faro
Region	Algarve (Central)

### Details +

Usage	Commercial
Type	Plot

### Areas +

Plot Area	101.520 m <sup>2</sup>
-----------	------------------------

### Views +

Countryside View, Panoramic View

- Plot Size 100,073.28m<sup>2</sup>
- 39 Accommodation Units in Hotel Project with 2,000m<sup>2</sup>
- Mains Water and Drainage
- 2 Boreholes
- Close to Town and Amenities
- Easy Access
- Distance to Beach 4.3km

This large plot is located very close to the centre of Guia, offering fantastic views across the countryside and peaceful surroundings.

The approved project consists of 39 Apartments in a 4\* hotel. 20 Accommodation units on Level 1 and 19 accommodation units on level -1. (3 Units on level 1 and 3 units on level -1 will be prepared for people with reduced mobility).

There will be a dining room and respective service pantry, public toilets, a lounge with bar service and a shop to sell products from the farm.

The hotel will have a total of 13 common outdoor parking spaces, 2 of them reserved to receive disabled guests, plus 12 private covered parking spaces in the garage on level -1, totally



## YOUR PROPERTY SPECIALISTS

---

closed.

On the eastern side of the hotel, relative to the rear east elevation, there will be a swimming pool, divided into two parts, the children's area with 45 cm, and an adult area with two levels, 65 cm and 1.75 m deep, with a transition ramp.

Land:

- Fully Fenced
  - 2 Bore holes
  - Mains water, electricity and sewage
  - 6 Greenhouses
  - 1 warehouse with 1 refectory
  - 1 sanitary installation
  - 1 cabinet and a refrigeration container
  - Tank 30m x 10m
  - 5 caravans for staff accommodation
  - Building for animal housing
  - Fruit trees
  - Vineyard for table grapes
- 

### Amenities

- Mains water & drainage
  - 2 Boreholes
  - Easy access
- 

### Location

- Distance to Sea – 2.6km
- Distance to Beach – 4.3km
- Distance to Nearest Golf – 2.8km
- Distance from Airport – 48.4km
- Distance to Nearest School – 1.6km
- Distance to Nearest Town – 3.8km (Guia)



Vilamoura Head Office - ALGARVE:  
Av. Vilamoura XXI, Sítio das Terras Ruivas, Loja B, Benfarras  
GPS. 37° 6' 52.426" N - 8° 7' 4.576" W

Togofor Homes - Sociedade Mediação Imobiliária, LDA | License: AMI 6902

+351 289 322 134  
enquiries@togofor-homes.com  
**www.togofor-homes.com**



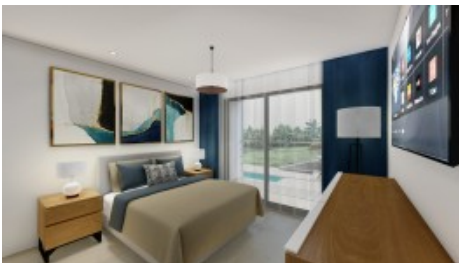
YOUR PROPERTY SPECIALISTS



## PHOTO GALLERY



Project



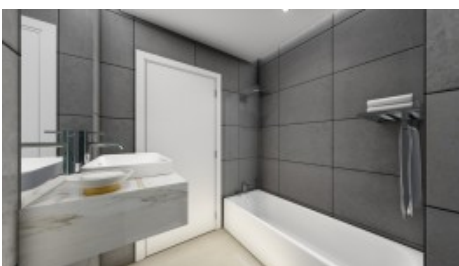
Project



Project



Project



Project



Project



Project



Project



Project



Entrance



Plot



Warehouse



Greenhouse



Construction



Water Tank



Vilamoura Head Office - ALGARVE:  
Av. Vilamoura XXI, Sítio das Terras Ruivas, Loja B, Benfarras  
GPS. 37° 6' 52.426" N - 8° 7' 4.576" W

Togofor Homes - Sociedade Mediação Imobiliária, LDA | License: AMI 6902

+351 289 322 134  
enquiries@togofor-homes.com  
[www.togofor-homes.com](http://www.togofor-homes.com)





YOUR PROPERTY SPECIALISTS



Plot



Plot



Plot



Vilamoura Head Office - ALGARVE:  
Av. Vilamoura XXI, Sítio das Terras Ruivas, Loja B, Benfarras  
GPS. 37° 6' 52.426" N - 8° 7' 4.576" W

Togofor Homes - Sociedade Mediação Imobiliária, LDA | License: AMI 6902

+351 289 322 134  
enquiries@togofor-homes.com  
[www.togofor-homes.com](http://www.togofor-homes.com)