

Charming 3+1 Bedroom Country House with Sea Views, Near Loulé

VILLA IN LOULÉ

ref. VM2073
750.000€



Location +

Town	Loulé
Parish	Loulé (São Sebastião)
Municipality	Loulé, Faro
Region	Algarve (Central)

Details +

Usage	Residential
Type	Villa
Construction Year	1947
Renovation Year	2017
Rooms	6
Bedrooms	3
Bathrooms	2
Floors	2
Furnished	Negotiable

- Living Area 117m²
- Plot Size 2969m²
- Year of Construction Pre 1951/Recently Renovated
- 3 Bedrooms, 2 Bathrooms, (1 En-Suite)
- AL Rental Licence/Successful History
- Tranquil Location
- 14.7 km to closest beach

Set in a tranquil location yet just a short drive to Loulé town centre with all amenities available this charismatic property is located in an elevated position with sunny south orientation taking in the open views across the country to the ocean. Lovingly resorted with some original features remaining and a large covered terrace to take advantage of the outdoor Algarvian lifestyle.

Ground Floor:

- Living/dining area with original floor tiles & fireplace
- Fully fitted country kitchen
- Renovated modern guest bathroom.
- Hallway to bedrooms
- 2 bedrooms with south facing views.
- 1 lounge off bedroom



YOUR PROPERTY SPECIALISTS

Areas +

Living Area	117 m ²
Plot Area	2.969 m ²

Access +

Tarmac

Parking +

Private Parking

Terrace +

Roof Terrace

Kitchen +

Fully Fitted, Modern

Heating-Cooling System +

Fireplace, Salamandra

Equipment +

Solar (Water)

Water-Electricity-Drainage +

All mains

Windows +

Single Glazing, Double glazing

Garden +

Landscaped, Natural, Walled, Trees

Exterior +

BBQ

Views +

Sea View, Panoramic View

- 1 en-suite bathroom for master bedroom

Up ½ flight stairs:

- Master bedroom

First Floor:

- Small extra room
- Storage area
- Roof terrace

Other Buildings:

- Summer House with dining area, fridge, and courtyard
- Original but updated separate kitchen with BBQ and bread oven

Outside:

- Large covered south facing terrace with cistera and bathtub!
- Patio to front of house.
- Off street private parking for 2 cars
- Mostly natural terrain with some manicured gardens

Amenities

- Mostly double-glazed windows
- Solar panels for hot water
- Wi-Fi points in all rooms
- All mains' utilities

Location

- 7.2 km into Loulé town centre
- 9.5 km to coast, 14.7 km to closest beach
- 10.3 km to nearest golf course
- 14 km to Vilamoura marina
- 31.7 km to Faro airport
- 1.2 km to nearest school



Vilamoura Head Office - ALGARVE:
Av. Vilamoura XXI, Sítio das Terras Ruivas, Loja B, Benfarras
GPS. 37° 6' 52.426" N - 8° 7' 4.576" W

Togofor Homes - Sociedade Mediação Imobiliária, LDA | License: AMI 6902

+351 289 322 134
enquiries@togofor-homes.com
www.togofor-homes.com



YOUR PROPERTY SPECIALISTS



PHOTO GALLERY



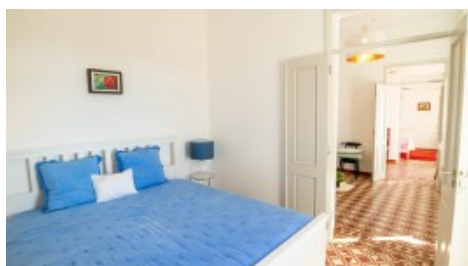
Kitchen



Kitchen



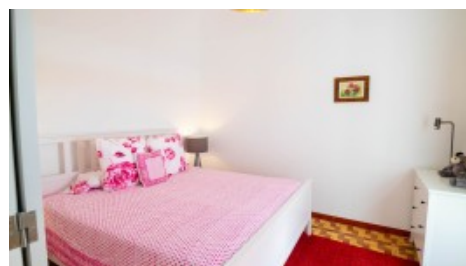
Hall



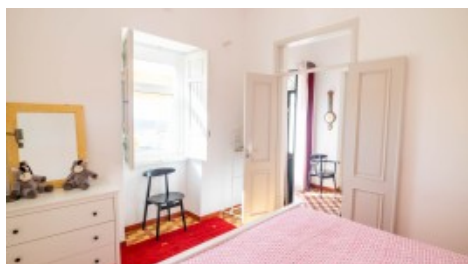
Bedroom



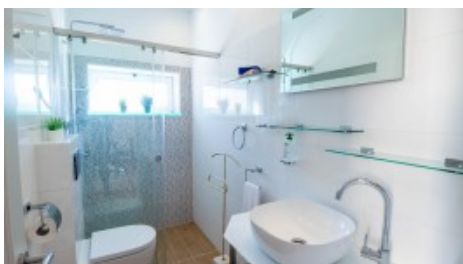
Bedroom Lounge



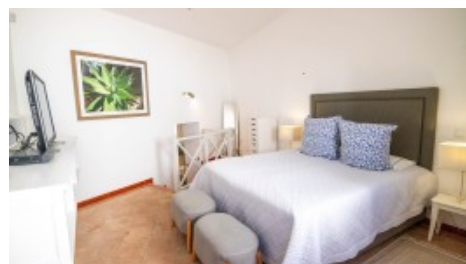
Bedroom



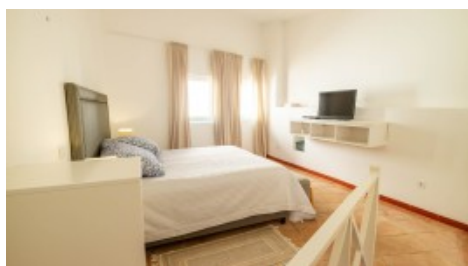
Bedroom



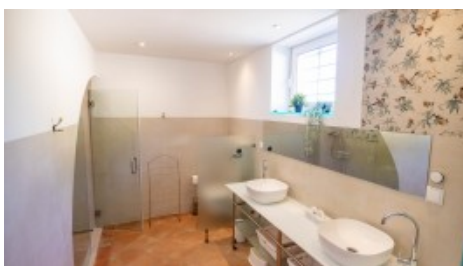
Bathroom



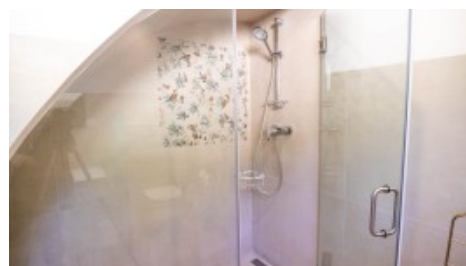
Bedroom



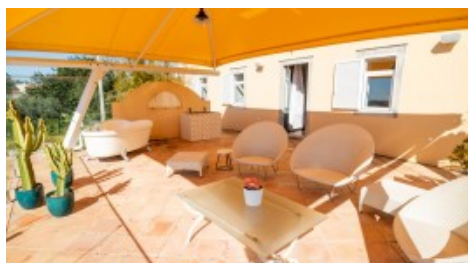
Bedroom



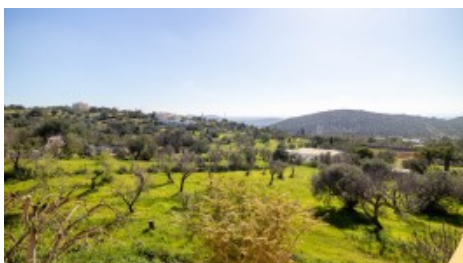
En-Suite Bathroom



Shower



Terrace



Terrace View



Property



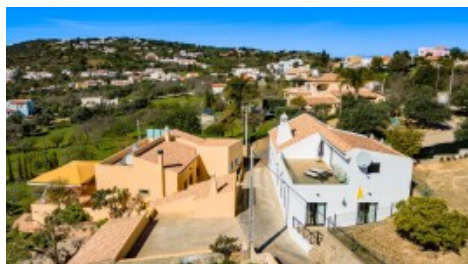
Vilamoura Head Office - ALGARVE:
Av. Vilamoura XXI, Sítio das Terras Ruivas, Loja B, Benfarras
GPS. 37° 6' 52.426" N - 8° 7' 4.576" W

Togofor Homes - Sociedade Mediação Imobiliária, LDA | License: AMI 6902

+351 289 322 134
enquiries@togofor-homes.com
www.togofor-homes.com



YOUR PROPERTY SPECIALISTS



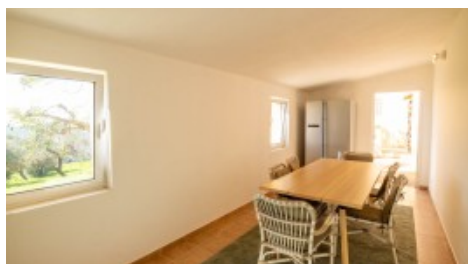
neighbourhood



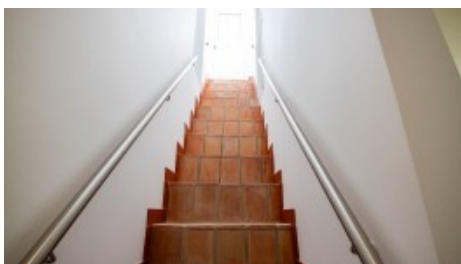
BBQ



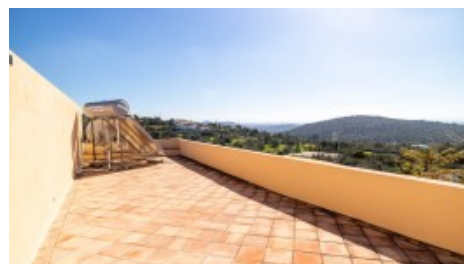
Summer House Terrace



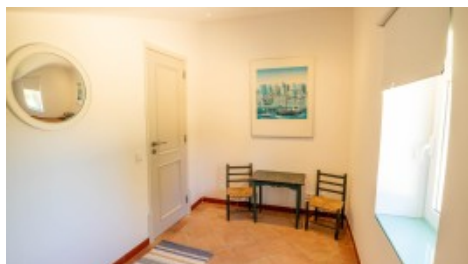
Summer House



Stairs to Roof Terrace



Roof Terrace



Room



Front of property



Garden



Parking



Vilamoura Head Office - ALGARVE:
Av. Vilamoura XXI, Sítio das Terras Ruivas, Loja B, Benfarras
GPS. 37° 6' 52.426" N - 8° 7' 4.576" W

Togofor Homes - Sociedade Mediação Imobiliária, LDA | License: AMI 6902

+351 289 322 134
enquiries@togofor-homes.com
www.togofor-homes.com