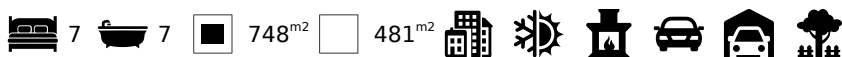


## Vast historical townhouse with apartments and main flat in the historic centre of Beja, Alentejo

TOWNHOUSE IN BEJA

ref. **AT2146**  
**625.000€**



### Location +

Town	Beja
Parish	Beja (Salvador e Santa Maria da Feira)
Municipality	Beja, Beja
Region	Alentejo (Central)

### Details +

Usage	Residential
Type	Townhouse
Rooms	10
Bedrooms	7
Bathrooms	7
Floors	3
Furnished	Partly

- Living area 748m² Construction 877m²
- Year of construction pre 1951, eventually 1900
- Renovation 2008 and 2013
- Huge house on three floors with courtyard, small terraces and roof terrace
- 3 x Studios, main flat with 3 bedrooms
- Further rooms available
- Garage for two cars, storage
- Extra rooms for renovation if desired
- Further renovation work is needed for this historical house

This exceptional historical vast town house is located in the historical part of Beja and has been converted from several dwellings. It offers 3 studio apartments, a flat on the first floor and in addition more rooms on the ground floor. The mainly renovated rooms are spacious, airy and light with varying tiles and wood floors, made to measure kitchens, grand bathrooms, high ceilings, outdoor spaces. The options are numerous depending on the requirements of a new owner. It needs more renovation but it is possible to move in asap. Could be ideal for a big generation family  
Ideal to rent out  
Could be used for a gallery or for public exhibitions



## YOUR PROPERTY SPECIALISTS

### Areas +

Living Area	748 m <sup>2</sup>
Usable area	877 m <sup>2</sup>
Plot Area	481 m <sup>2</sup>

### Access +

Tarmac, Easy Access

### Parking +

Parking outdoors, Garage, Double Garage

### Living Room +

Lounge/Dining

### Terrace +

Balcony/Terrace, Roof Terrace

### Kitchen +

Open Plan

### Other Rooms +

Storage

### Bedroom +

7 Bedrooms

### Bathroom +

3 Ensuite Bathrooms, 3 Bathrooms

### Heating-Cooling System +

Heating-Cooling System 1 Under floor heating, Salamandra, Fireplace

Heating-Cooling System 2 AC, Electric heaters

### Equipment +

Internet/Phone, Boiler, Gas Boiler

### Water-Electricity-Drainage +

Mains electric, Mains water, Mains drainage

### Windows +

Double glazing, Single Glazing, Manual Shutters/Blinds

Could be good for commercial use as well

### House 1

Ground floor & First Floor

- Entrance hall
- Individual studio
- Stone stairway to flat on first floor
- Access to small terrace and to roof terrace
- Stairs to top floor

### Second floor

- Open plan kitchen and living room with woodburner
- Three bedrooms
- Access to small terrace and roof terrace
- Outdoor steps down to courtyard

Courtyard at lower ground level

- Two studio apartments with woodburners
- Courtyard
- Steps to roof terrace
- Garage
- Independent entrance from side street
- Extra room for renovation
- Entrance to first floor hallway

### Amenities

- Woodburner x 4 and a fireplace
- Radiators on top floor
- Underfloor heating in the living room on second floor
- New electric water boiler and pump
- Double glazing and wood shutters on the ground and first floor
- Internet available in area

### Location

0km to Beja with all amenities  
9km to Praia fluvial Cinco Reis (an inland lake beach)  
147km to Faro airport, 173km to Lisbon airport

### Other Info

Not in operation as AL/guesthouse at present.



Ourique Office - ALENTEJO:  
Monte Curral Velho  
GPS. 37° 37' 31.41" N - 8° 17' 5.275" W

Togofor Homes - Sociedade Mediação Imobiliária, LDA | License: AMI 6902

+351 286 094 036  
enquiries@togofor-homes.com  
[www.togofor-homes.com](http://www.togofor-homes.com)



YOUR PROPERTY SPECIALISTS

**Garden +**  
Outdoor lighting

**Exterior +**  
Courtyard

**Views +**  
Town View



Ourique Office - ALENTEJO:  
Monte Curral Velho  
GPS. 37° 37' 31.41" N - 8° 17' 5.275" W

Togofor Homes - Sociedade Mediação Imobiliária, LDA | License: AMI 6902

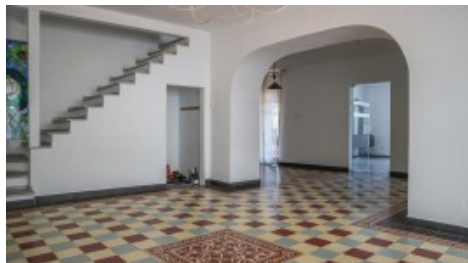
+351 286 094 036  
enquiries@togofor-homes.com  
**www.togofor-homes.com**



YOUR PROPERTY SPECIALISTS



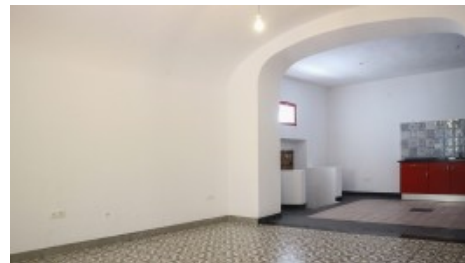
## PHOTO GALLERY



Open Plan



Open Plan



Studio Ground 1



Studio 1



Bathroom 1



Studio 2



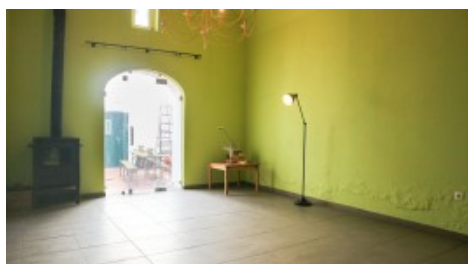
Studio 2



Studio 2



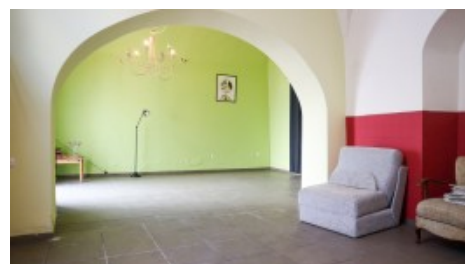
Courtyard



Courtyard studio



Courtyard studio



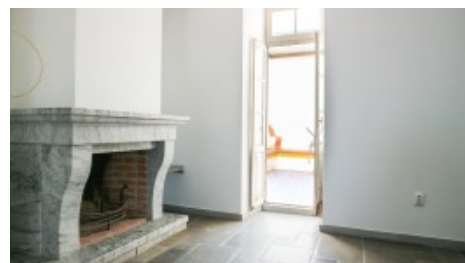
Courtyard studio



Main flat kitchen



Kitchen/Dining



Fireplace



Ourique Office - ALENTEJO:  
Monte Curral Velho  
GPS. 37° 37' 31.41" N - 8° 17' 5.275" W

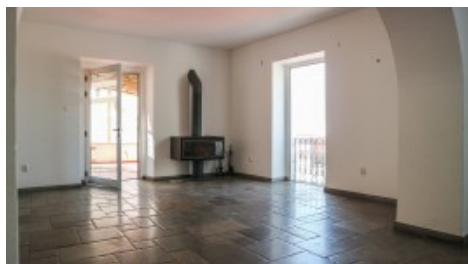
Togofor Homes - Sociedade Mediação Imobiliária, LDA | License: AMI 6902

+351 286 094 036  
enquiries@togofor-homes.com  
[www.togofor-homes.com](http://www.togofor-homes.com)

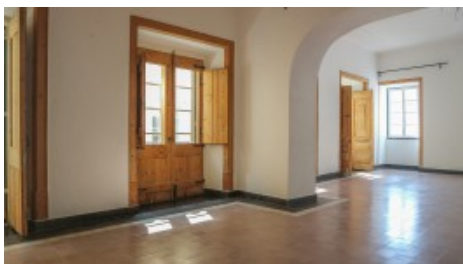




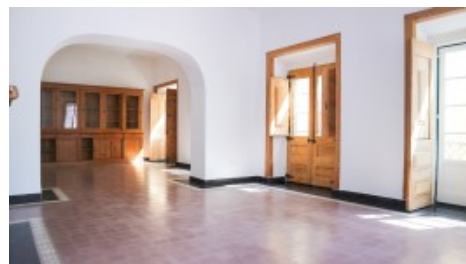
YOUR PROPERTY SPECIALISTS



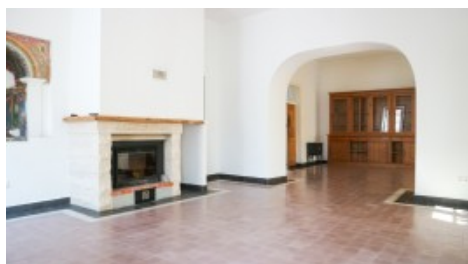
Access to Roof Terrace



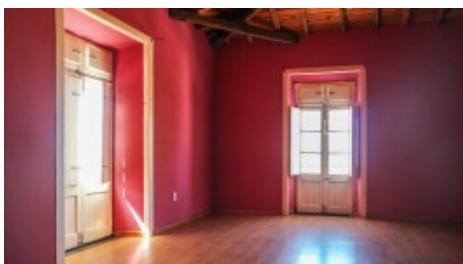
Lounge



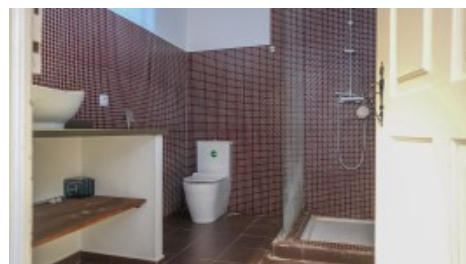
Lounge



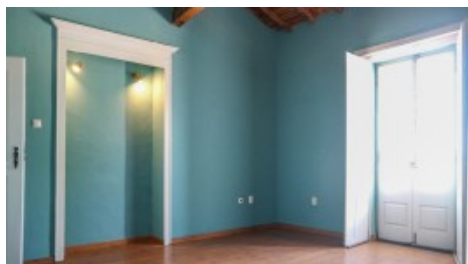
Woodburner



Bedroom



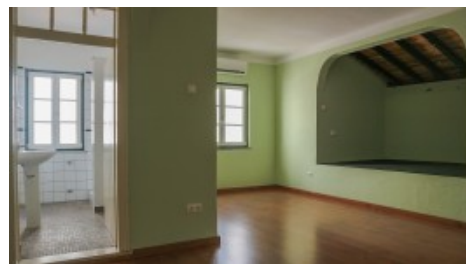
Bathroom



Bedroom



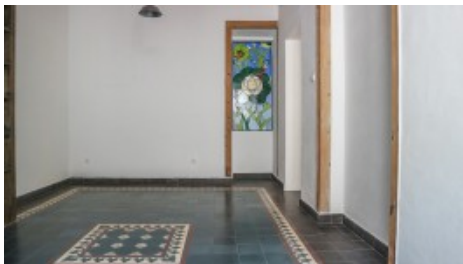
Bathroom



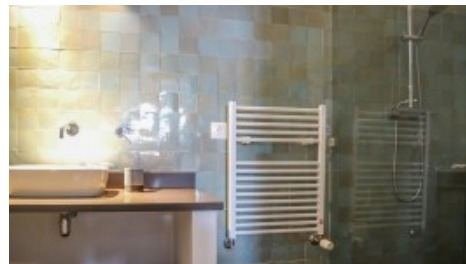
En-Suite



Roof Terrace



Bedroom



Bathroom



Roof Terrace



Facade



Side



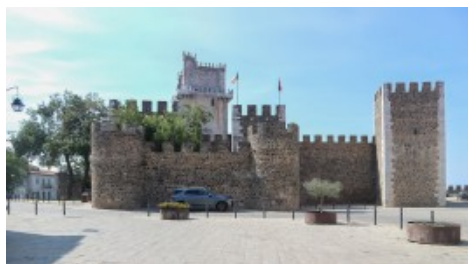
Ourique Office - ALENTEJO:  
Monte Curral Velho  
GPS. 37° 37' 31.41" N - 8° 17' 5.275" W

Togofor Homes - Sociedade Mediação Imobiliária, LDA | License: AMI 6902

+351 286 094 036  
enquiries@togofor-homes.com  
[www.togofor-homes.com](http://www.togofor-homes.com)



YOUR PROPERTY SPECIALISTS



*Beja Castle*



*Church, Beja*



Ourique Office - ALENTEJO:  
Monte Curral Velho  
GPS. 37° 37' 31.41" N - 8° 17' 5.275" W

Togofor Homes - Sociedade Mediação Imobiliária, LDA | License: AMI 6902

+351 286 094 036  
enquiries@togofor-homes.com  
**www.togofor-homes.com**

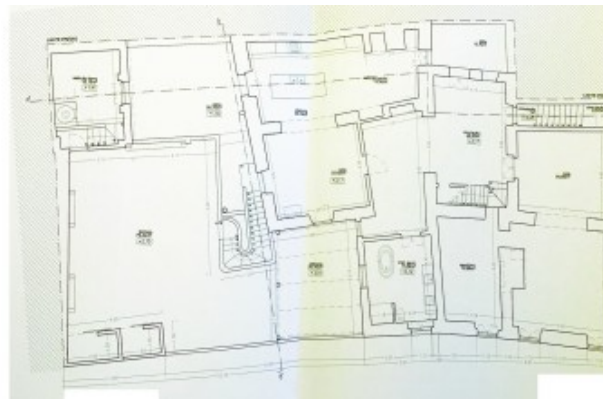


YOUR PROPERTY SPECIALISTS

## FLOOR PLANS



*Ground floor*



*Existing First floor*



Ourique Office - ALENTEJO:  
Monte Curral Velho  
GPS. 37° 37' 31.41" N - 8° 17' 5.275" W

Togofor Homes - Sociedade Mediação Imobiliária, LDA | License: AMI 6902

+351 286 094 036  
enquiries@togofor-homes.com  
**www.togofor-homes.com**