



Equestrian Estate and 2 licensed ruins in Monte da Rocha lake's picturesque peninsula in Alentejo

COUNTRY ESTATE IN OURIQUE

ref. AT2313
995.000€

314^{m²}
 144.500^{m²}
🌳
🏡
🏠

NA

Location +

Town	Ourique
Parish	Ourique
Municipality	Ourique, Beja
Region	Alentejo (Central)

Details +

Usage	Residential
Type	Country Estate
Construction Year	1999
Rooms	7
Floors	1

Areas +

Living Area	314 m ²
Plot Area	144.500 m ²

- 2 Plots: 14,45 Ha. with independent entrance gateways
- Construction Area: 248 m² agricultural building
- Divisions: 5
- Licensed Construction Area: 314 m²
- Licensed Divisions: 7
- Sand riding training school
- Internationally sized grass jumping arena

The property consists of:

- 2 large plots with licensed ruins along side the lake with independent entrance gateways
- Productive Olive Plantation with around 400 trees
- Paddocks including 11 loose boxes in concrete ring beam construction and American Barn configuration with approximately 900m²
- Sand training school
- Internationally sized grass jumping arena
- Grip Room
- Internal land fenced to interlinking paddocks with field shelters and piped water
- Workshop
- Fully fenced on perimeter.



YOUR PROPERTY SPECIALISTS

Access +

Dirt track, Easy Access, Turning Space, Manual Entrance Gate

Parking +

Driveway

Other Rooms +

Storage

Water-Electricity-Drainage +

Borehole, Septic tank, Generator, Photovoltaik

Garden +

Fenced

Exterior +

Patio, Stables, Paddock, Pond

Views +

Countryside View, Wide Open Views

The connection of the Alqueva Dam to the Monte da Rocha reservoir, a project scheduled for completion by the end of 2025, will reinforce the water resources of the Monte da Rocha reservoir. Allowing the lake level to be maintained permanently at 70% and continuing to ensure public water supply to the region.

Ourique region have had a great development in the last years providing a surgery center and Castro Verde has a 24 hours medical attendance unit just 15 kms way.

Amenities

- Borehole
- Water piping along the property
- Internal land fenced
- Workshop
- Horse cleaning area both interior and exterior

Location

- 6 km from Ourique with schools, local market and several commercial and social areas
- 10 km from Funcheira Train Station
- 62 km from South West Coast beaches
- 100 km from Faro International Airport



Ourique Office - ALENTEJO:
Monte Curral Velho
GPS. 37° 37' 31.41" N - 8° 17' 5.275" W

Togofor Homes - Sociedade Mediação Imobiliária, LDA | License: AMI 6902

+351 286 094 036
enquiries@togofor-homes.com
www.togofor-homes.com



PHOTO GALLERY



Property



Building



Corridor



Boxes



Boxes



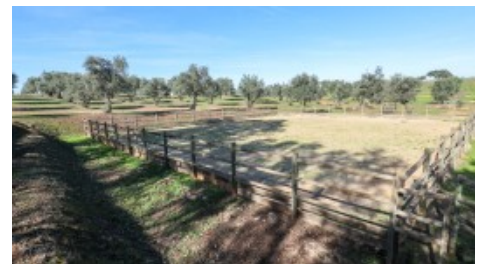
Washing area



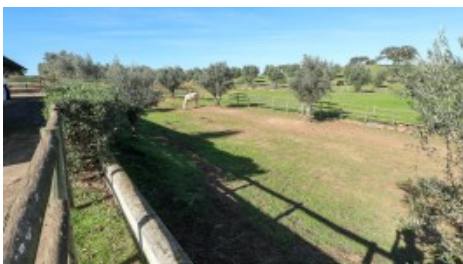
Outside washing area



Sand training school



Sand training school



Stable fenced areas



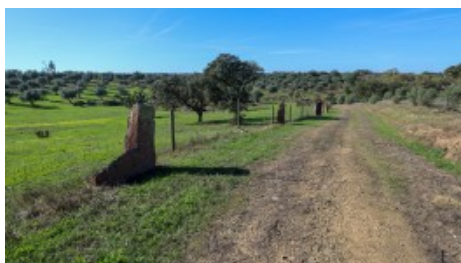
Stable & Horse



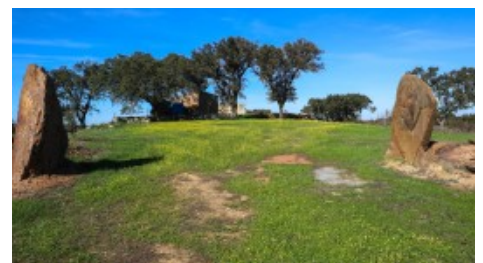
Horses



Olive grove



Olive grove



Large Ruin



Large Ruin



Ruin



Ruin



Ruins



Lake view



Lake private access



Entrance



Happy Animals



Alentejo



River Beach