



REDUCED



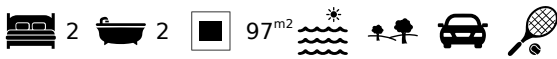
Spacious 2 Bedroom second floor apartment in coastal village of Salema, West Algarve

APARTMENT IN SALEMA

ref. LW2338

340.000€

329.000€



Location +

Town	Salema
Parish	Budens
Municipality	Vila do Bispo, Faro
Region	Algarve (West)

Details +

Usage	Residential
Type	Apartment
Construction Year	1991
Rooms	3
Bedrooms	2
Bathrooms	2
Floors	1
Furnished	Negotiable

- Fixed Price Promotion until 30.04.25
- Living area 97m², Construction area 109.2m²
- 2 double bedrooms
- 1 Bathroom, 1 Shower room
- Year of construction 1991
- Furnishing negotiable
- Communal roof terrace
- Distance from the beach approx. 550m

Built in 1991 this second floor apartment has a generous living and dining room and a good size kitchen. Lovely country views and both bedrooms are also a generous size and have fitted wardrobes. The location is superb within minutes from the beautiful Salema beach and restaurants. It is an excellent choice for permanent residence or ideal for a holiday home with great rental potential.

Apartment

- Entrance hall
- Living and dining area with patio door to a Juliet balcony
- Kitchen with patio doors to terrace
- 2 double bedrooms with patio doors to terrace
- Family bathroom & shower room



YOUR PROPERTY SPECIALISTS

Areas +

Living Area 97 m²
Usable area 109 m²

Access +

Tarmac

Parking +

Parking outdoors

Living Room +

Lounge/Dining

Terrace +

Balcony/Terrace, Communal Roof
Terrace

Kitchen +

Fully Fitted, Fully Equipped

Other Rooms +

Storage

Bedroom +

Fitted Wardrobe

Bathroom +

1 Family Bathroom, 1 Shower room

Heating-Cooling System +

Electric heaters

Equipment +

Cable/Satellite TV, Intercom, Boiler

Water-Electricity-Drainage +

Mains electric, Mains drainage,
Mains water, Gas Deposit

Windows +

Single Glazing, Manual
Shutters/Blinds

Exterior +

Tennis court

Views +

External

- Communal roof terrace
- Ample parking
- Communal garden at front
- Access to paddle court

Amenities

- Secure entrance with intercom
- Maintenance & management available
- Fitted wardrobes
- Sat TV

Location

- Distance to beach: 550m
- Distance to sea: 460m
- Distance to Golf: 2km
- Distance from Airport: 102km
- Distance to nearest school: 1km
- Distance into centre of Salema: 500m

Other Info

No elevator.



Lagos Office - ALGARVE:
Marina de Lagos, Edifício Astrolábio, Lote 24-Loja 5
GPS. 37° 6' 41.85" N - 8° 40' 30.251" W

Togofor Homes - Sociedade Mediação Imobiliária, LDA | License: AMI 6902

+351 282 476 568
enquiries@togofor-homes.com
www.togofor-homes.com



YOUR PROPERTY SPECIALISTS

Countryside View, Sea View, Village view



Lagos Office - ALGARVE:
Marina de Lagos, Edifício Astrolábio, Lote 24-Loja 5
GPS. 37° 6' 41.85" N - 8° 40' 30.251" W

Togofor Homes - Sociedade Mediação Imobiliária, LDA | License: **AMI 6902**

+351 282 476 568
enquiries@togofor-homes.com
www.togofor-homes.com



PHOTO GALLERY



Living/Dining



Kitchen



Kitchen



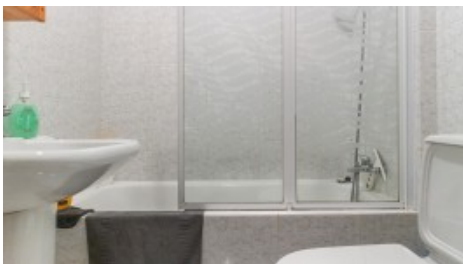
Bedroom



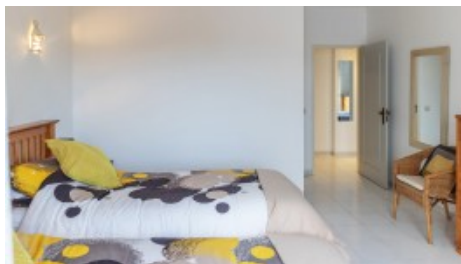
Bedroom



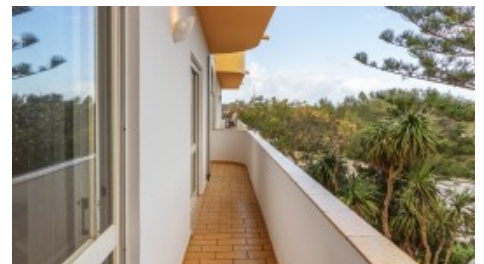
View



Bathroom



Bedroom



Balcony



Communal Roof Terrace



View



Surroundings



Salema beach



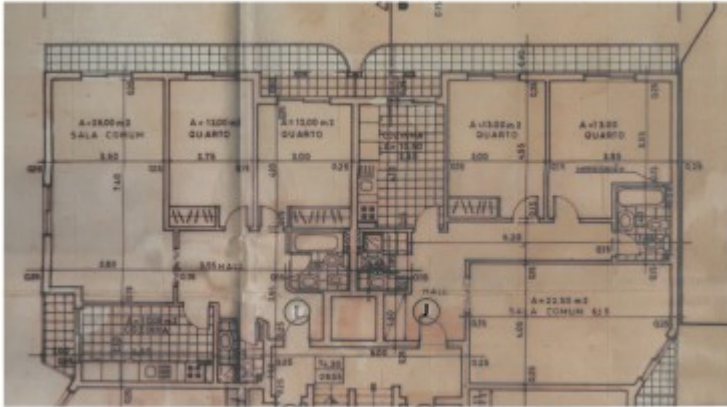
Salema



Salema beach



FLOOR PLANS



Plan