




A Passionate Property for Rural Tourism with Main House and Guest Annexes in Alvito, Beja, Alentejo

GUESTHOUSE IN ALVITO

ref. **PDB1958**

1.345.000€

8 11 660m² 200.000m² 

B-

Location +

Town Alvito
Parish Alvito
Municipality Alvito, Beja
Region Alentejo (Central)

Details +

Usage Commercial
Type Guesthouse
Rooms 10
Bedrooms 8
Bathrooms 11
Floors 1
Furnished Partly

- Living area 660m²
- Construction area 700m²
- Total area 200.000m² (20ha)
- 8 bedrooms, 11 bathrooms
- Pool and seating areas
- Cultivation of olive groves, orchards

This guest accommodation in fantastic traditional Alentejo environment with original touches, lots of comfort and high quality materials is divided into the main house and further smaller annexes.

An additional income comes from the cultivation of olive groves, pasture and orchards with irrigation, all in good condition which enhances the agricultural value and the possibility of establishing an agricultural project here.

This property/farm could be a great investment with several possibilities.

Outside:

- Pool & Garden & Leisure Areas
- Orchards and Olive groves
- Warehouse for the agricultural machinery
- Caretaker's house



YOUR PROPERTY SPECIALISTS

Areas +

Living Area	660 m ²
Usable area	700 m ²
Plot Area	200.000 m ²

Heating-Cooling System +

Central Heating, AC

Pool +

Swimming Pool

Views +

Countryside View

Amenities

- Central Heating
- AC
- Water from the Alqueva irrigation system
- All rooms are equipped with TV, Internet, price includes all furniture except personal decorative items

Location

- Alvito, Beja, southern part of the Alentejo province

Other Info

FL002



Vilamoura Head Office - ALGARVE:
Av. Vilamoura XXI, Sítio das Terras Ruivas, Loja B, Benfarras
GPS. 37° 6' 52.426" N - 8° 7' 4.576" W

Togofor Homes - Sociedade Mediação Imobiliária, LDA | License: AMI 6902

+351 289 322 134
enquiries@togofor-homes.com
www.togofor-homes.com



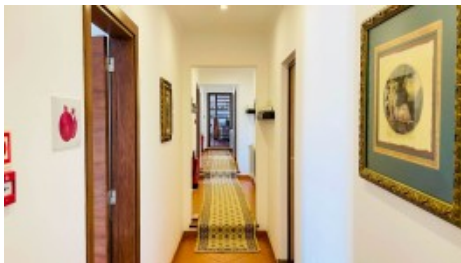
YOUR PROPERTY SPECIALISTS



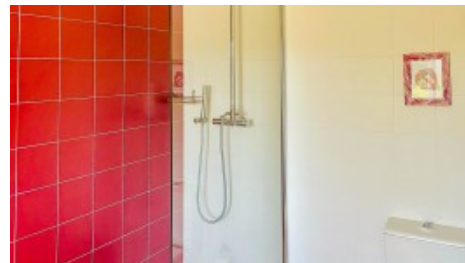
PHOTO GALLERY



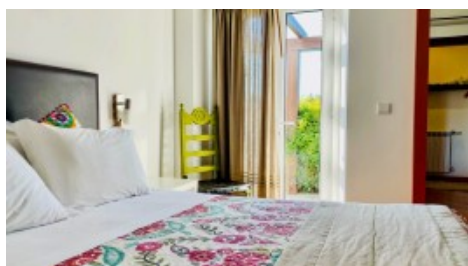
Reception



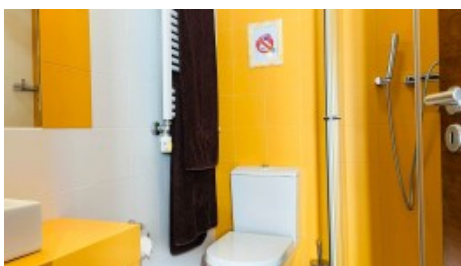
Corridor



Bathroom



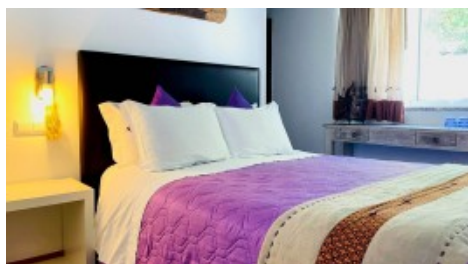
Bedroom



Bathroom



Bedroom



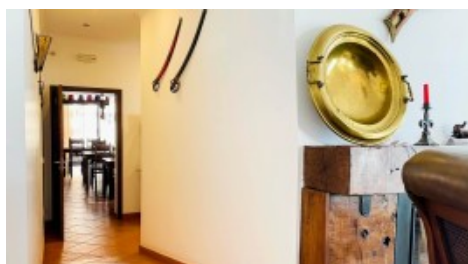
Bedroom



Bathroom



Sitting Room



Sitting/Dining



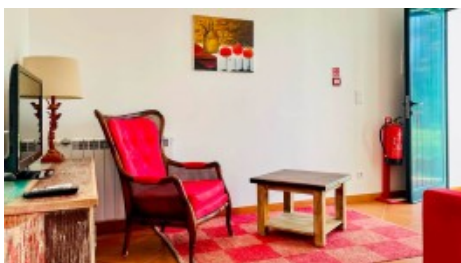
Kitchen



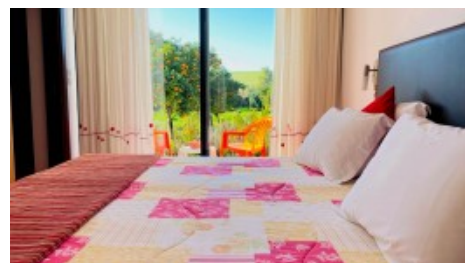
Kitchen



House



'Tomato Haus'



'Tomato' House



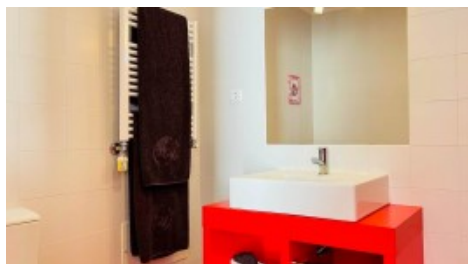
Vilamoura Head Office - ALGARVE:
Av. Vilamoura XXI, Sítio das Terras Ruivas, Loja B, Benfarras
GPS. 37° 6' 52.426" N - 8° 7' 4.576" W

Togofor Homes - Sociedade Mediação Imobiliária, LDA | License: AMI 6902

+351 289 322 134
enquiries@togofor-homes.com
www.togofor-homes.com



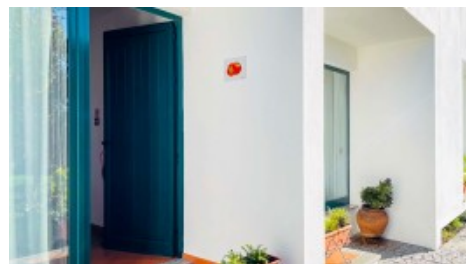
YOUR PROPERTY SPECIALISTS



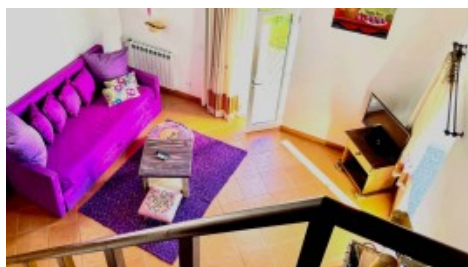
'Tomato House'



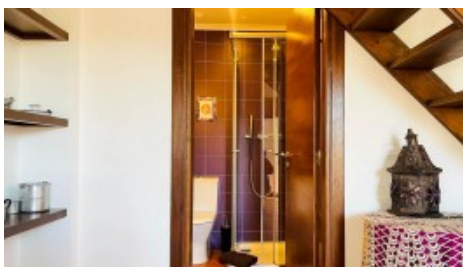
'Tomato House'



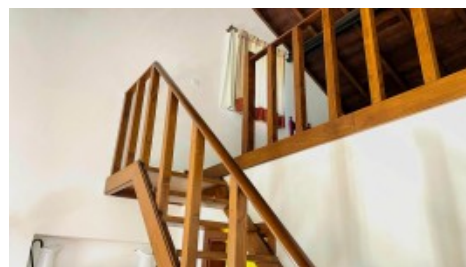
'Fig House'



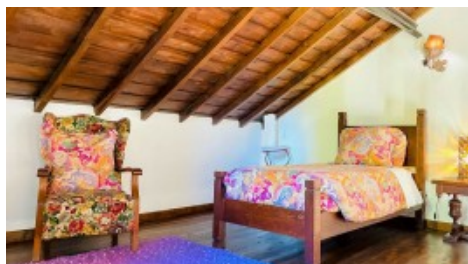
'Fig House'



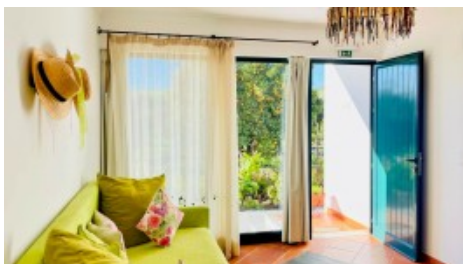
'Fig House'



'Fig House'



'Fig House'



'Olive House'



'Olive House'



'Olive House'



Driveway



Property



Vilamoura Head Office - ALGARVE:
Av. Vilamoura XXI, Sítio das Terras Ruivas, Loja B, Benfarras
GPS. 37° 6' 52.426" N - 8° 7' 4.576" W

TogoFor Homes - Sociedade Mediação Imobiliária, LDA | License: AMI 6902

+351 289 322 134
enquiries@togo-for-homes.com
www.togo-for-homes.com