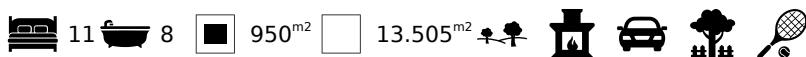


## Estate with 6 independent houses and big plot of land, Estremoz - Évora

COUNTRY HOUSE IN ESTREMOZ

ref. **PDB1974**

**1.500.000€**



### Location +

Town	Estremoz
Parish	Estremoz (Santa Maria e Santo André)
Municipality	Estremoz, Évora
Region	Alentejo (Central)

### Details +

Usage	Residential
Type	Country House
Construction Year	2010
Rooms	13
Bedrooms	11
Bathrooms	8

- Construction area 1083m²
- Plot 13.505m²
- 11 Bedroom, 8 Bathrooms
- Built in 2010
- Tennis Court
- Stables
- Olive Grove

It started in 2010 when an artist found a set of old houses and decided to build a house for family, friends and, if wanted, for a future rural tourism.

It could work as a multi-family residence or as an investment to rent out the 6 houses.

- T1 - Funcho (Fennel) - Vineyard view
- T1 - Rosmaninho (Lavender) - Courtyard overlooking the mountains (Serra da Ossa)
- T2 - Poejo
- T2 - Alecrim (Rosemary) - Courtyard overlooking the mountains (Serra da Ossa)

All the houses above have:



#### Areas +

Living Area	950 m <sup>2</sup>
Usable area	1.083 m <sup>2</sup>
Plot Area	13.505 m <sup>2</sup>

#### Access +

Tarmac

#### Parking +

Parking Places

#### Kitchen +

Fully Fitted

#### Heating-Cooling System +

Fireplace

#### Water-Electricity-Drainage +

Mains water, Borehole

#### Windows +

PVC

#### Garden +

Fruit Trees

#### Exterior +

Tennis court

#### Views +

Countryside View, Mountain View

- Potential kitchen open to the living room, with dishwasher and fridge, but no stove or oven
- 1-2 Bedrooms with masonry wardrobe

#### T2 - Casa da Piscina

- Fully equipped kitchen opening to the living room
- 2 Bedrooms
- 1 small office attached to the kitchen
- 1 gym
- 1 bathroom
- Facing the pool

#### Main House

- 3 floors
- Fully equipped kitchen opening to the living room
- 4 bedrooms, 3 bathrooms
- Office
- Laundry and storage
- Courtyard overlooking the mountains (Serra da Ossa)

#### All the houses have:

- Insulated roof
- Wooden ceilings
- Heat recovery
- Water heater
- PVC doors and windows
- Electricity and water independent of each other
- Mains water but there is a system that allows you to switch to the borehole water

#### Outside:

- Pool
- Courtyard
- Tennis Court
- Stables
- 95 olive trees that on average produce 2 tons per year of olive that is sold to the Lagar de Arcos
- Fruit trees: spruce, orange trees, cherry trees and pear trees
- Lavender and Rosemary garden

#### Amenities

- 2 boreholes - The one with 85m<sup>3</sup> supplies water to the houses and the pool. The one with 15m<sup>3</sup> was transformed into a beautiful stone pit that adorns the exterior
- 4 septic tanks
- The property is all fenced
- Parking space for 12 cars



YOUR PROPERTY SPECIALISTS

---

#### Location

- 10 mins from Estremoz
  - 1h30 from Lisbon
- 

#### Other Info

AG025



Vilamoura Head Office - ALGARVE:  
Av. Vilamoura XXI, Sítio das Terras Ruivas, Loja B, Benfarras  
GPS. 37° 6' 52.426" N - 8° 7' 4.576" W

Togofor Homes - Sociedade Mediação Imobiliária, LDA | License: AMI 6902

+351 289 322 134  
enquiries@togofor-homes.com  
**www.togofor-homes.com**





YOUR PROPERTY SPECIALISTS



## PHOTO GALLERY



*Funcho - Fennel*



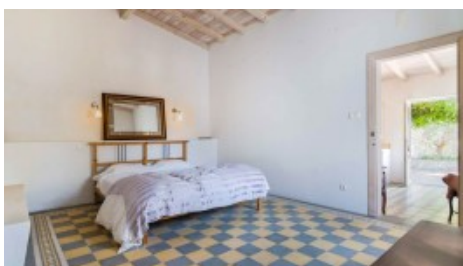
*Funcho - View*



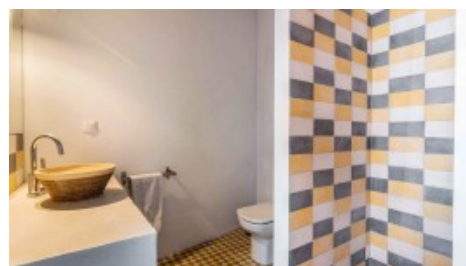
*Funcho - Entrance*



*Funcho - Kitchen*



*Funcho - Bedroom*



*Funcho - Bathroom*



*Funcho*



*Rosmaninho - Rosemary*



*Rosmaninho - Entrance*



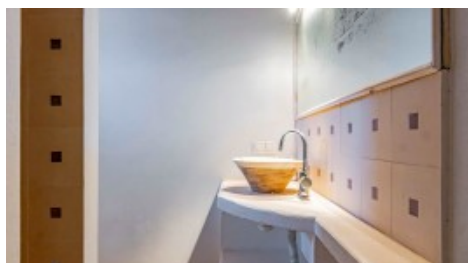
*Rosmaninho - Living*



*Rosmaninho - Kitchen*



*Rosmaninho - Bedroom*



*Rosmaninho - Bathroom*



*Courtyard*



*Courtyard*



Vilamoura Head Office - ALGARVE:  
Av. Vilamoura XXI, Sítio das Terras Ruivas, Loja B, Benfarras  
GPS. 37° 6' 52.426" N - 8° 7' 4.576" W

Togofor Homes - Sociedade Mediação Imobiliária, LDA | License: AMI 6902

+351 289 322 134  
enquiries@togofor-homes.com  
[www.togofor-homes.com](http://www.togofor-homes.com)





YOUR PROPERTY SPECIALISTS



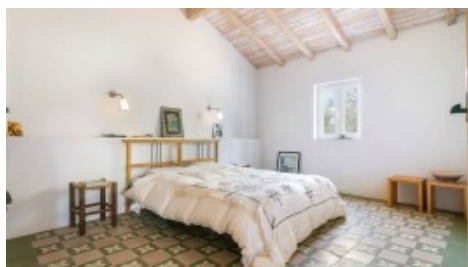
Poejo



Poejo - Kitchen and Living area



Poejo - Courtyard



Poejo - Bedroom



Poejo - Bedroom



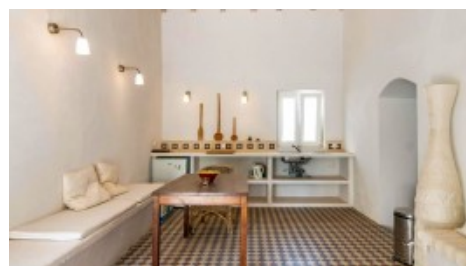
Poejo - Back



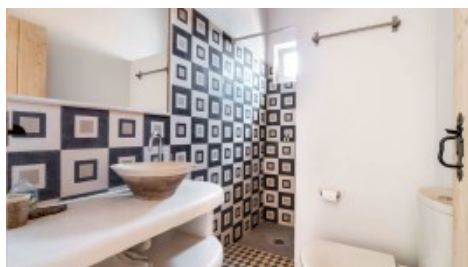
Alecrim



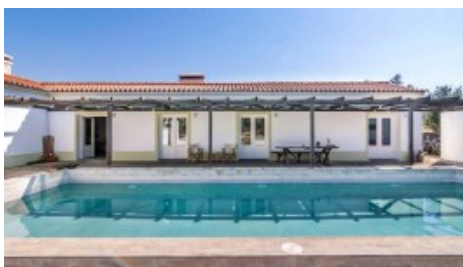
Alecrim - Entrance



Alecrim - Kitchen and Living area



Alecrim - Bathroom



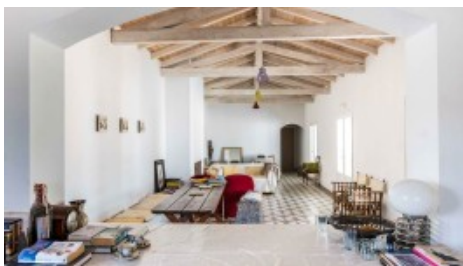
Casa Pool



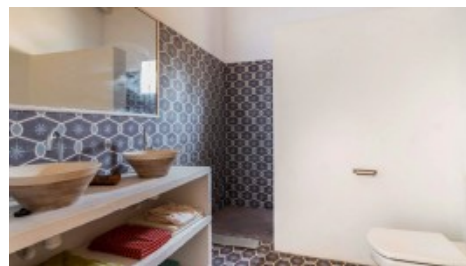
Casa Piscina - Open Plan



Casa Piscina - Kitchen



Casa Piscina - Dining Area



Casa Piscina - Bathroom



Vilamoura Head Office - ALGARVE:  
Av. Vilamoura XXI, Sítio das Terras Ruivas, Loja B, Benfarras  
GPS. 37° 6' 52.426" N - 8° 7' 4.576" W

Togofor Homes - Sociedade Mediação Imobiliária, LDA | License: AMI 6902

+351 289 322 134  
enquiries@togofor-homes.com  
[www.togofor-homes.com](http://www.togofor-homes.com)



YOUR PROPERTY SPECIALISTS



*Casa Piscina - Pool*



*Tennis Court and Stables, Riding Space*



*Village*



*Window with View*



Vilamoura Head Office - ALGARVE:  
Av. Vilamoura XXI, Sítio das Terras Ruivas, Loja B, Benfarras  
GPS. 37° 6' 52.426" N - 8° 7' 4.576" W

Togofor Homes - Sociedade Mediação Imobiliária, LDA | License: AMI 6902

+351 289 322 134  
enquiries@togofor-homes.com  
**www.togofor-homes.com**