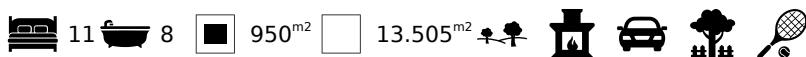


Estate with 6 independent houses and big plot of land, Estremoz - Évora

COUNTRY HOUSE IN ESTREMOZ

ref. **PDB1974**

1.500.000€



Location +

Town	Estremoz
Parish	Estremoz (Santa Maria e Santo André)
Municipality	Estremoz, Évora
Region	Alentejo (Central)

Details +

Usage	Residential
Type	Country House
Construction Year	2010
Rooms	13
Bedrooms	11
Bathrooms	8

- Construction area 1083m²
- Plot 13.505m²
- 11 Bedroom, 8 Bathrooms
- Built in 2010
- Tennis Court
- Stables
- Olive Grove

It started in 2010 when an artist found a set of old houses and decided to build a house for family, friends and, if wanted, for a future rural tourism.

It could work as a multi-family residence or as an investment to rent out the 6 houses.

- T1 - Funcho (Fennel) - Vineyard view
- T1 - Rosmaninho (Lavender) - Courtyard overlooking the mountains (Serra da Ossa)
- T2 - Poejo
- T2 - Alecrim (Rosemary) - Courtyard overlooking the mountains (Serra da Ossa)

All the houses above have:



Areas +

Living Area	950 m ²
Usable area	1.083 m ²
Plot Area	13.505 m ²

Access +

Tarmac

Parking +

Parking Places

Kitchen +

Fully Fitted

Heating-Cooling System +

Fireplace

Water-Electricity-Drainage +

Mains water, Borehole

Windows +

PVC

Garden +

Fruit Trees

Exterior +

Tennis court

Views +

Countryside View, Mountain View

- Potential kitchen open to the living room, with dishwasher and fridge, but no stove or oven
- 1-2 Bedrooms with masonry wardrobe

T2 - Casa da Piscina

- Fully equipped kitchen opening to the living room
- 2 Bedrooms
- 1 small office attached to the kitchen
- 1 gym
- 1 bathroom
- Facing the pool

Main House

- 3 floors
- Fully equipped kitchen opening to the living room
- 4 bedrooms, 3 bathrooms
- Office
- Laundry and storage
- Courtyard overlooking the mountains (Serra da Ossa)

All the houses have:

- Insulated roof
- Wooden ceilings
- Heat recovery
- Water heater
- PVC doors and windows
- Electricity and water independent of each other
- Mains water but there is a system that allows you to switch to the borehole water

Outside:

- Pool
- Courtyard
- Tennis Court
- Stables
- 95 olive trees that on average produce 2 tons per year of olive that is sold to the Lagar de Arcos
- Fruit trees: spruce, orange trees, cherry trees and pear trees
- Lavender and Rosemary garden

Amenities

- 2 boreholes - The one with 85m³ supplies water to the houses and the pool. The one with 15m³ was transformed into a beautiful stone pit that adorns the exterior
- 4 septic tanks
- The property is all fenced
- Parking space for 12 cars



YOUR PROPERTY SPECIALISTS

Location

- 10 mins from Estremoz
 - 1h30 from Lisbon
-

Other Info

AG025



Vilamoura Head Office - ALGARVE:
Av. Vilamoura XXI, Sítio das Terras Ruivas, Loja B, Benfarras
GPS. 37° 6' 52.426" N - 8° 7' 4.576" W

Togofor Homes - Sociedade Mediação Imobiliária, LDA | License: AMI 6902

+351 289 322 134
enquiries@togofor-homes.com
www.togofor-homes.com



YOUR PROPERTY SPECIALISTS



PHOTO GALLERY



Funcho - Fennel



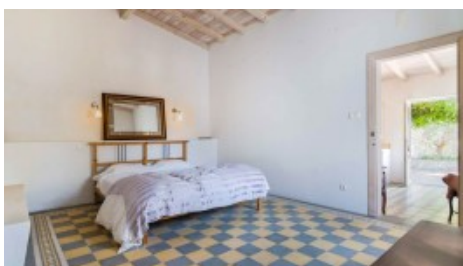
Funcho - View



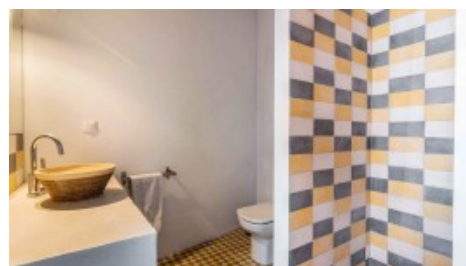
Funcho - Entrance



Funcho - Kitchen



Funcho - Bedroom



Funcho - Bathroom



Funcho



Rosmaninho - Rosemary



Rosmaninho - Entrance



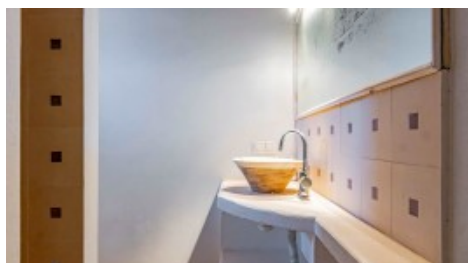
Rosmaninho - Living



Rosmaninho - Kitchen



Rosmaninho - Bedroom



Rosmaninho - Bathroom



Courtyard



Courtyard



Vilamoura Head Office - ALGARVE:
Av. Vilamoura XXI, Sítio das Terras Ruivas, Loja B, Benfarras
GPS. 37° 6' 52.426" N - 8° 7' 4.576" W

Togofor Homes - Sociedade Mediação Imobiliária, LDA | License: AMI 6902

+351 289 322 134
enquiries@togofor-homes.com
www.togofor-homes.com



YOUR PROPERTY SPECIALISTS



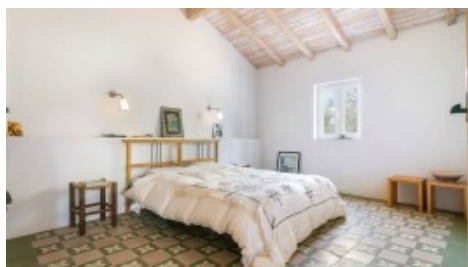
Poejo



Poejo - Kitchen and Living area



Poejo - Courtyard



Poejo - Bedroom



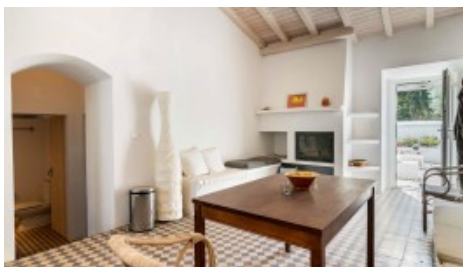
Poejo - Bedroom



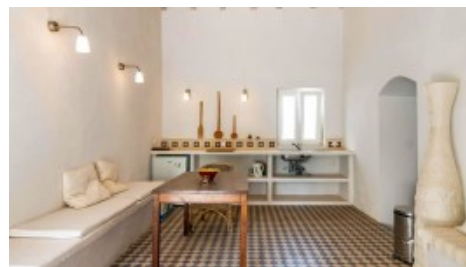
Poejo - Back



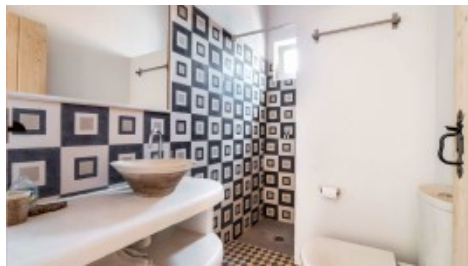
Alecrim



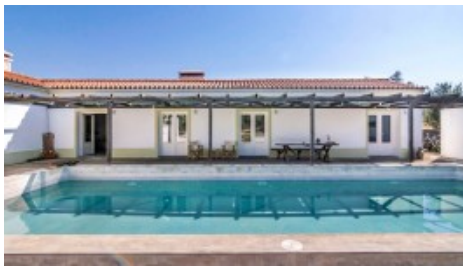
Alecrim - Entrance



Alecrim - Kitchen and Living area



Alecrim - Bathroom



Casa Pool



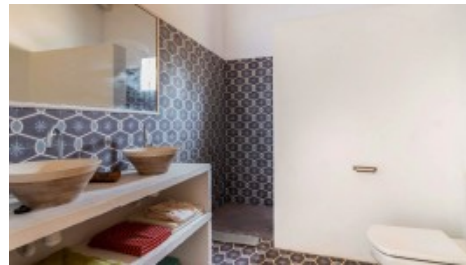
Casa Piscina - Open Plan



Casa Piscina - Kitchen



Casa Piscina - Dining Area



Casa Piscina - Bathroom



Vilamoura Head Office - ALGARVE:
Av. Vilamoura XXI, Sítio das Terras Ruivas, Loja B, Benfarras
GPS. 37° 6' 52.426" N - 8° 7' 4.576" W

Togofor Homes - Sociedade Mediação Imobiliária, LDA | License: AMI 6902

+351 289 322 134
enquiries@togofor-homes.com
www.togofor-homes.com



YOUR PROPERTY SPECIALISTS



Casa Piscina - Pool



Tennis Court and Stables, Riding Space



Village



Window with View



Vilamoura Head Office - ALGARVE:
Av. Vilamoura XXI, Sítio das Terras Ruivas, Loja B, Benfarras
GPS. 37° 6' 52.426" N - 8° 7' 4.576" W

Togofor Homes - Sociedade Mediação Imobiliária, LDA | License: AMI 6902

+351 289 322 134
enquiries@togofor-homes.com
www.togofor-homes.com