



Rural guest houses or farm or big property is located in the heart of the Natural Park of São Mamede, Alentejo

ref. PDBAG045
995.000€

GUESTHOUSE IN CASTELO DE VIDE



Location +

Town	Castelo de Vide
Parish	S. João Baptista
Municipality	Castelo de Vide, Portalegre
Region	Alentejo (North)

Details +

Usage	Residential
Type	Guesthouse
Bedrooms	6
Bathrooms	7
Floors	2
Furnished	Partly

- In total 5 very comfortable guest houses
- 4 have a license for Rural Tourism
- 1 is the owners' house
- Mix of traditional features with modern comfort
- Spacious bathrooms.
- Reception house

Casa Terra - T1 (1 bedroom/ Energetic Rating A)
 Amor Perfeito - T1 (1 bedroom/Energetic Rating A)
 Casa Hridaya - T1 (1 bedroom/Energetic Rating A)
 Casa Grande - T2 (2 bedrooms/Energetic Rating A)
 and
 Owners' House - T1 (1 bedroom/Energetic Rating C)

The owner s house has a spacy living room with fireplace and a generous suite with a closet. All the guest houses are fully furnished and equipped, and all have a full kitchen, underfloor heating and air condition. This property could also be ideal for a big family or to host family and guests.



YOUR PROPERTY SPECIALISTS

Areas +

Living Area 613 m²
Plot Area 103.000 m²

Terrace +

Terraces

Heating-Cooling System +

Fireplace, AC

Water-Electricity-Drainage +

River, Mains water, Septic tank,
Mains electric, Solar electricity, well

Pool +

Swimming Pool

Garden +

Trees, Natural, Fruit Trees

Views +

Countryside View, Mountain View,
Garden View

Extra Features +

Farm

Amenities

Underfloor heating, air condition
Fully equipped
2 pools, one small and one big one, about 1.6 deep, water all year around from the stream with a pump
Parking lot
Water from the mains and a well
Electricity from the mains and solar
2 biological septic tanks
House for storage

Location

4km from Castelo de Vide
16km from Marvão
20km from Portalegre
19km from Spain
225km from Lisbon

Other Info

For family reasons, the Quinta as Turismo Rural has been temporarily closed and is for the owner's personal use only, but can be reactivated at any time.



Vilamoura Head Office - ALGARVE:
Av. Vilamoura XXI, Sítio das Terras Ruivas, Loja B, Benfarras
GPS. 37° 6' 52.426" N - 8° 7' 4.576" W

Togofor Homes - Sociedade Mediação Imobiliária, LDA | License: AMI 6902

+351 289 322 134
enquiries@togofor-homes.com
www.togofor-homes.com



PHOTO GALLERY



House



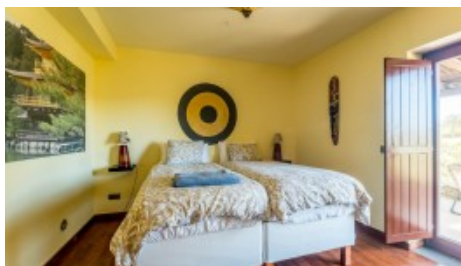
Lounge



Kitchen



Bedroom



Bedroom



Garden



Reception



Guest accommodation



Lounge



Kitchen



Terrace View



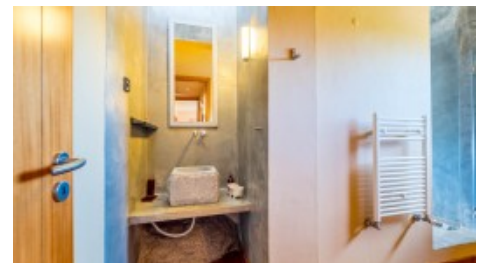
Garden



Kitchen



Lounge/Dining



Bathroom



Bathroom



Bathroom



Terrace View



Terrace



Living/Dining



Terrace



Terrace



Kitchen



Lounge



Bedroom



Pool



Garden



Garden



Front of property



Alentejo



YOUR PROPERTY SPECIALISTS



Alentejo



River Beach



Vilamoura Head Office - ALGARVE:
Av. Vilamoura XXI, Sítio das Terras Ruivas, Loja B, Benfarras
GPS. 37° 6' 52.426" N - 8° 7' 4.576" W

Togofor Homes - Sociedade Mediação Imobiliária, LDA | License: **AMI 6902**

+351 289 322 134
enquiries@togofor-homes.com
www.togofor-homes.com