



## Guest House with owners' accommodation near the lake in Alandroal, Évora

COUNTRY ESTATE IN TERENA

ref. **PDBED009**

**1.150.000€**



### Location +

Town	Terena
Parish	Terena (S. Pedro)
Municipality	Alandroal, Évora
Region	Alentejo (Central)

### Details +

Usage	Residential
Type	Country Estate
Renovation Year	2015
Rooms	10
Bedrooms	8
Bathrooms	8
Floors	2
Furnished	Fully

The property is located on an approx. 6 ha land near the lake and enjoys panoramic views. It is not far to the road that connects Estremoz to Reguengoz de Monsaraz and has got views to the castle of the town Terrena.

There is a business and a private part. The private residential part is on the ground floor in the corner of the L of the building and consists of a lounge with fireplace, a kitchen and dining with fireplace, one bedroom and one small bathroom. The guest rooms are on two floors with a lounge as well.

The plot is kept naturally but offers a plantation of walnut trees, a large salt-water swimming pool with terraces around and lawn fields as well as a playground for children. The plantation continues on the other side of the property and has a very big agricultural building right at the very bottom.

The property is connected to the electricity and water networks of the city and has in addition a borehole, an irrigation canal and a water waltz.

Very well located in a touristic area, but quiet on its own huge plot.



YOUR PROPERTY SPECIALISTS

#### Areas +

Living Area	487 m <sup>2</sup>
Usable area	595 m <sup>2</sup>
Plot Area	59.250 m <sup>2</sup>

#### Access +

Country Road

#### Parking +

Parking outdoors

#### Kitchen +

Fully Fitted

#### Bedroom +

Fully Furnished

#### Heating-Cooling System +

AC, Fireplace

#### Water-Electricity-Drainage +

Borehole, Mains electric, Mains water

#### Pool +

Swimming Pool

#### Garden +

Lawn, Trees

#### Views +

Panoramic View

#### Extra Features +

Farm

#### Location

17km to River Beach  
29km to Monsaraz  
59km to Evora  
203km to Lisbon



Vilamoura Head Office - ALGARVE:  
Av. Vilamoura XXI, Sítio das Terras Ruivas, Loja B, Benfarras  
GPS. 37° 6' 52.426" N - 8° 7' 4.576" W

Togofor Homes - Sociedade Mediação Imobiliária, LDA | License: AMI 6902

+351 289 322 134  
enquiries@togofor-homes.com  
[www.togofor-homes.com](http://www.togofor-homes.com)





YOUR PROPERTY SPECIALISTS



## PHOTO GALLERY



*Aerial View*



*Dining Area*



*Dining Area*



*Kitchen*



*Living Room*



*Living Room*



*Bedroom*



*Balcony*



*View*



*Bedroom*



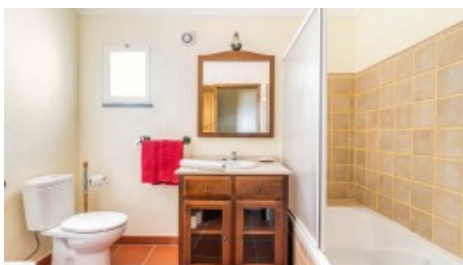
*Bathroom*



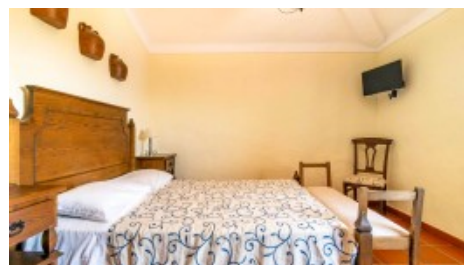
*Bedroom 2*



*Bedroom 2*



*Bathroom 2*



*Bedroom 3*



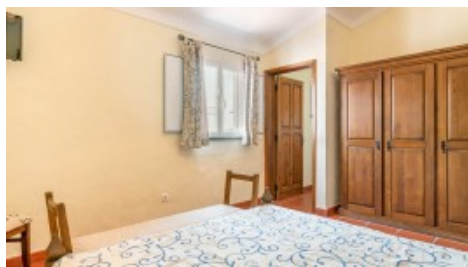
Vilamoura Head Office - ALGARVE:  
Av. Vilamoura XXI, Sítio das Terras Ruivas, Loja B, Benfarras  
GPS. 37° 6' 52.426" N - 8° 7' 4.576" W

Togofor Homes - Sociedade Mediação Imobiliária, LDA | License: AMI 6902

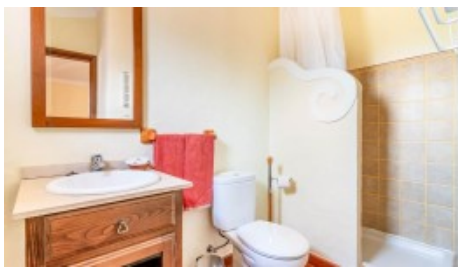
+351 289 322 134  
enquiries@togofor-homes.com  
[www.togofor-homes.com](http://www.togofor-homes.com)



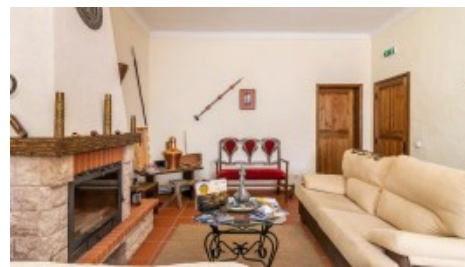
YOUR PROPERTY SPECIALISTS



Bedroom 3



Bathroom 3



Living Room



Kitchen



Garden



Pool



Pond



Vilamoura Head Office - ALGARVE:  
Av. Vilamoura XXI, Sítio das Terras Ruivas, Loja B, Benfarras  
GPS. 37° 6' 52.426" N - 8° 7' 4.576" W

Togofor Homes - Sociedade Mediação Imobiliária, LDA | License: AMI 6902

+351 289 322 134  
enquiries@togofor-homes.com  
[www.togofor-homes.com](http://www.togofor-homes.com)