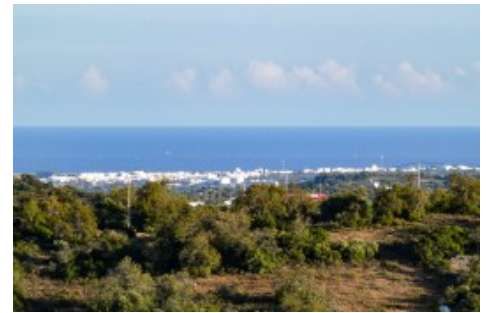




REDUCED




## Picturesque Plot of Land with Approved Project for Construction of 2 houses, Santa Catarina, East Algarve

PLOT IN SANTA CATARINA DA FONTE DO BISPO

ref. TV2046

545.000€

536.000€

12.211 m<sup>2</sup> 



### Location +

Town	Santa Catarina da Fonte do Bispo
Parish	Santa Catarina da Fonte do Bispo
Municipality	Tavira, Faro
Region	Algarve (East)

### Details +

Usage	Residential
Type	Plot

### Areas +

Surface area	377 m <sup>2</sup>
Plot Area	12.211 m <sup>2</sup>

- Construction size 377m<sup>2</sup>
- Total urban footprint 529m<sup>2</sup>
- Plot size 12.211m<sup>2</sup>
- Approved project in place
- The price includes the plot and the approved project but not the construction of the building
- 15km to sea and beaches
- Sea views

The building permission is for a 2 en-suite bedroom villa with 377m<sup>2</sup> footprint. The basement would provide enough space for a garage for 4 cars, several storage rooms and two multimedia rooms. In addition to this, a guest house with 2 suites, with an area of just over 150m<sup>2</sup>.

This project is viable for touristic usage in the form of country houses, with a biological pool and leisure area facing south with sea views. There is an additional plan for 4 x T0 studios in drawing in a plot of 444m<sup>2</sup> but these are not included in the approved architecture plan and should be submitted for approval if so desired.



## YOUR PROPERTY SPECIALISTS

---

**Access +**  
Country Road

---

**Views +**  
Countryside View, Sea View

---

**Extra Features +**  
Building Plots

With this additional area of construction, it makes this project an exciting opportunity for Rural Tourism in a picturesque location close to Santa Catarina da Fonte do Bispo.

The surrounding land consists of wide-open plains with carob, fig, almond and olive trees.

Price is for plot only, construction price is extra and costs depend on finishes desired. It is anticipated that all approvals will be in place for construction works to commence in 2024.

Please contact us to see the full plans and for a visit to the location.

---

### Amenities

- License for borehole
  - Licença de Especialidades in process
  - Licença de Construção in process
  - Possibility to connect to mains electricity and phone network
- 

### Location

- 2km to Santa Catarina da Fonte do Bispo
- 15km to Tavira
- 15km to sea and beaches
- 19km to golf
- 31km to Faro airport



Vilamoura Head Office - ALGARVE:  
Av. Vilamoura XXI, Sítio das Terras Ruivas, Loja B, Benfarras  
GPS. 37° 6' 52.426" N - 8° 7' 4.576" W

Togofor Homes - Sociedade Mediação Imobiliária, LDA | License: AMI 6902

+351 289 322 134  
enquiries@togofor-homes.com  
[www.togofor-homes.com](http://www.togofor-homes.com)



YOUR PROPERTY SPECIALISTS

## PHOTO GALLERY



*Project - Garden*



*Project - Open Plan*



*Project - Living Room*



*Project - Villa*



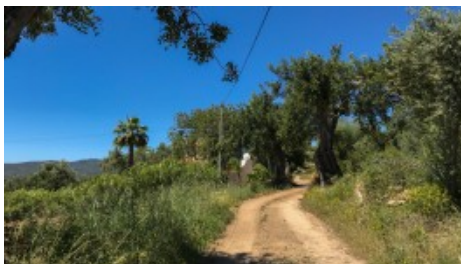
*Project - Garage*



*Project - Aerial View*



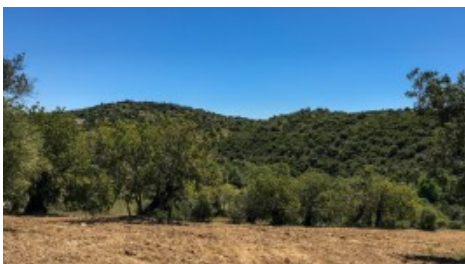
*Ruin*



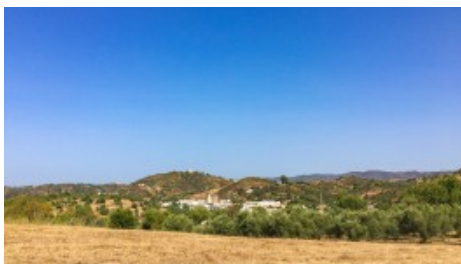
*Access Track*



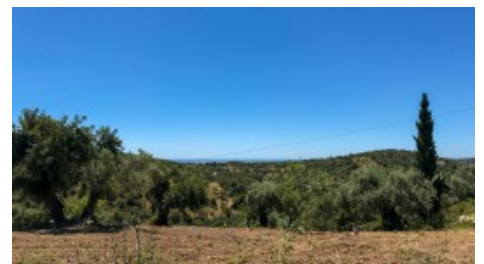
*Plot*



*View*



*View*



*Surrounding Area*



Vilamoura Head Office - ALGARVE:  
Av. Vilamoura XXI, Sítio das Terras Ruivas, Loja B, Benfarras  
GPS. 37° 6' 52.426" N - 8° 7' 4.576" W

Togofor Homes - Sociedade Mediação Imobiliária, LDA | License: AMI 6902

+351 289 322 134  
enquiries@togofor-homes.com  
[www.togofor-homes.com](http://www.togofor-homes.com)