

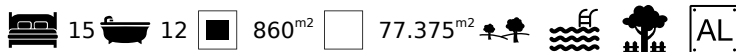


## 15 Bedroom Quinta with 11 Apartments, Guia

GUESTHOUSE IN GUIA

ref. VM1986

4.300.000€



### Location +

Town	Guia
Parish	Guia
Municipality	Albufeira, Faro
Region	Algarve (Central)

### Details +

Usage	Residential
Type	Guesthouse
Rooms	15
Bedrooms	15
Bathrooms	12
Floors	2
Furnished	Negotiable

### Areas +

Living Area	860 m²
Plot Area	77.375 m²

- Living Area 860m²
- Plot Size 77.375m²
- 15 Bedrooms, 12 Bathrooms
- Great Business Opportunity
- Picturesque Plot
- Distance to Beach - 4km

The private plot is fully fenced with manicured gardens, a natural area, variety of trees and pool area. The Quinta benefits from constant sunshine throughout giving you a peaceful and picturesque place to relax.

### Main House:

- In need of renovations
- Ground Floor - T2
- Upper Floor - T2

4 Houses which make up 11 apartments, currently used for holiday rentals:

- 2x T0
- 7x T1
- 1x T2
- All have individual lounge/dining areas, kitchens and terraces

There is a separate building currently used as a laundry room.



## YOUR PROPERTY SPECIALISTS

### Access +

Tarmac

### Parking +

Driveway

### Water-Electricity-Drainage +

Mains water, Cistern

### Pool +

12x6m

### Garden +

Landscaped, Natural, Walled,  
Fenced, Auto irrigation

### Exterior +

BBQ

### Views +

Countryside View

On the property still remains the big "Lagar" (room for olive oil production) with all of the original olive oil press within. The "Lagar" room has great potential for a conference/meeting room.

### Outside:

- Terraces for each apartment
- Pool with big terrace for sunbathing
- BBQ
- Landscaped garden and natural area with a variety of trees

### Amenities

- Mains Water and Cistern
- Double glazed windows
- Automatic Entrance Gates
- Large Parking Space
- Fully Fenced Plot

### Location

- Distance to sea - 3km
- Distance to Beach - 4km
- Distance to Nearest Golf - 4km
- Distance From Airport - 46km
- Distance to Nearest School - 2km
- Distance to Nearest Town - 2km (Guia)



Vilamoura Head Office - ALGARVE:

Av. Vilamoura XXI, Sítio das Terras Ruivas, Loja B, Benfarras  
GPS. 37° 6' 52.426" N - 8° 7' 4.576" W

Togofor Homes - Sociedade Mediação Imobiliária, LDA | License: AMI 6902

+351 289 322 134

enquiries@togofor-homes.com

[www.togofor-homes.com](http://www.togofor-homes.com)





YOUR PROPERTY SPECIALISTS



## PHOTO GALLERY



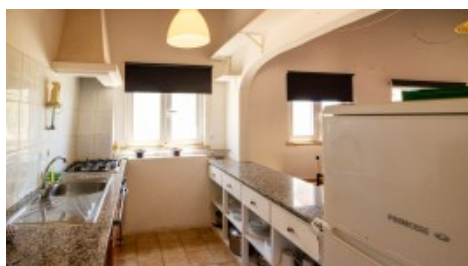
Apartment 1 - Living/Dining



Apartment - Open Plan



Apartment 1 - View



Apartment 1 - Kitchen



Apartment 1 - Bedroom



Apartment 1 - Bathroom



Apartment 2



Apartment 2 - Bedroom



Apartment 3



Apartment 4



Apartment 5



Apartment 6



Apartment 7



Apartments



Main House & Apartments



Vilamoura Head Office - ALGARVE:  
Av. Vilamoura XXI, Sítio das Terras Ruivas, Loja B, Benfarras  
GPS. 37° 6' 52.426" N - 8° 7' 4.576" W

Togofor Homes - Sociedade Mediação Imobiliária, LDA | License: AMI 6902

+351 289 322 134  
enquiries@togofor-homes.com  
[www.togofor-homes.com](http://www.togofor-homes.com)



YOUR PROPERTY SPECIALISTS



*Olive Factory - Lagar*



*Terrace & Pool*



*Main House*



*Pool*



*Communal garden*



*Terrace*



*Garden*



Vilamoura Head Office - ALGARVE:  
Av. Vilamoura XXI, Sítio das Terras Ruivas, Loja B, Benfarras  
GPS. 37° 6' 52.426" N - 8° 7' 4.576" W

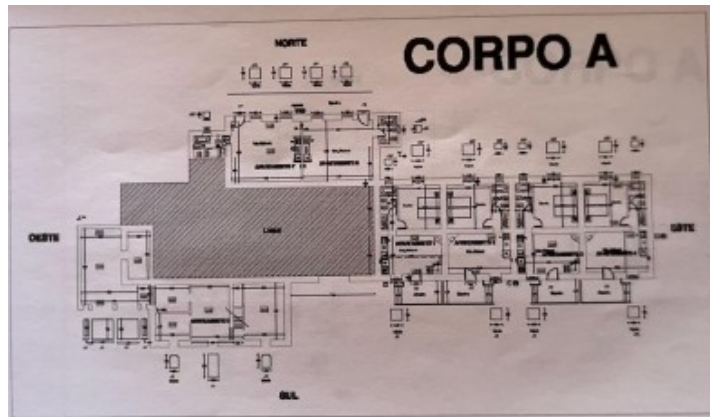
Togofor Homes - Sociedade Mediação Imobiliária, LDA | License: AMI 6902

+351 289 322 134  
enquiries@togofor-homes.com  
[www.togofor-homes.com](http://www.togofor-homes.com)

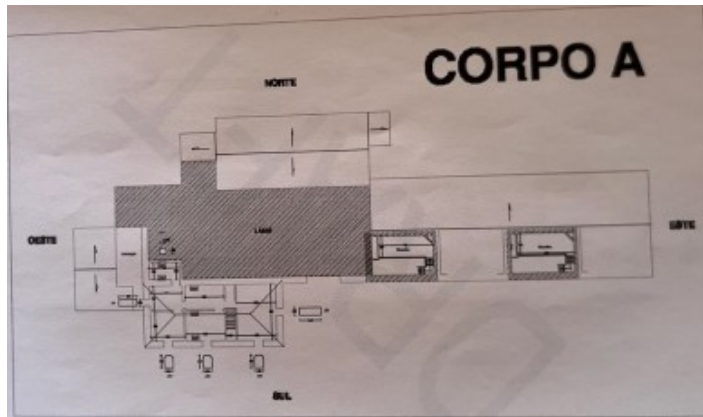




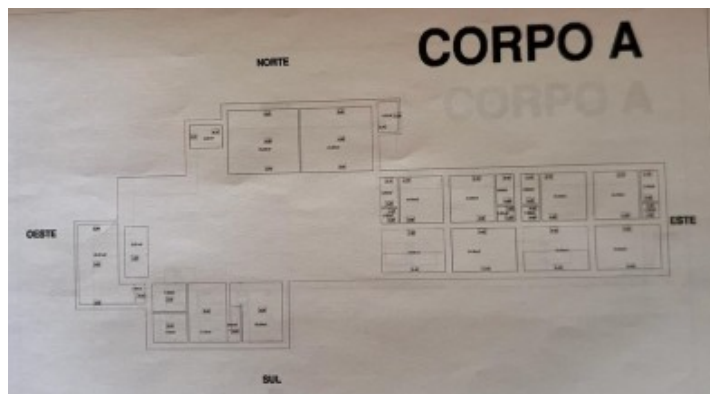
## FLOOR PLANS



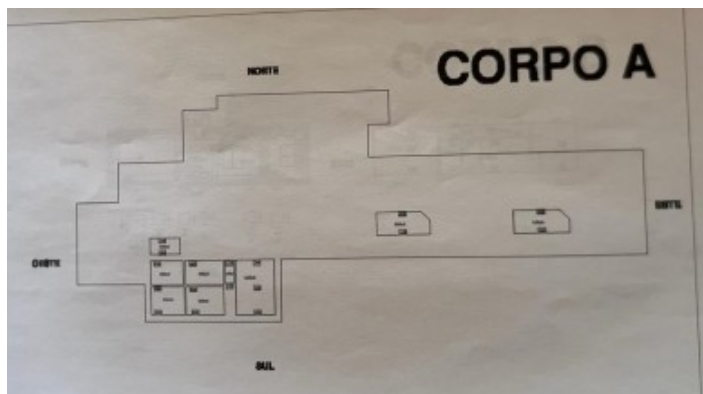
Plan Corpo A



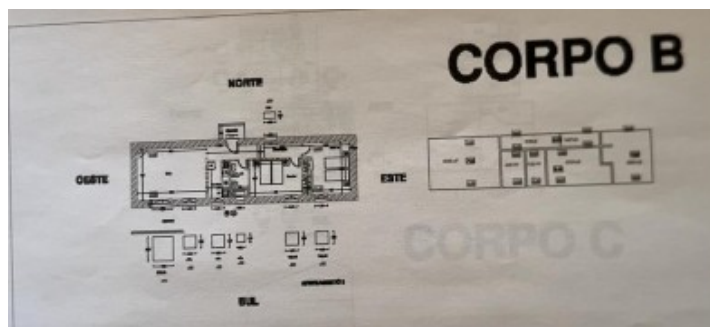
Plan Corpo A 1



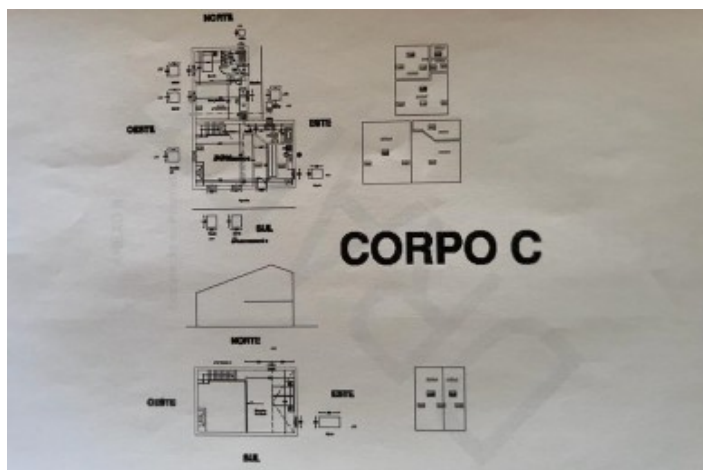
Plan Corpo A 2



Plan Corpo A 3



Plan Corpo B



Plan Corpo C