



6 Bedroom Semi-Detached Quinta 'Village' with 4 Annexes & Open Country Views near Paderne

GUESTHOUSE IN ALTE

ref. VM2183
695.000€



Location +

Town	Alte
Parish	Alte
Municipality	Loulé, Faro
Region	Algarve (Central)

Details +

Usage	Residential
Type	Guesthouse
Construction Year	1935
Renovation Year	2023
Bedrooms	6
Bathrooms	7
Floors	2
Furnished	Partly

- Living Area 332m²
- Plot Size 780m²
- Main House: 3 Bedrooms, 3 Bathrooms, (2 En-Suite) 1 W.C
- 3 One Bedroom Annexes & 1 Studio
- Year of Construction 1939, Renovation 2023
- Distance to Beach 19.4km
- Business Opportunity for B&B/Guesthouse
- Quiet Area
- Views to Countryside Hills
- Various independent accommodations

Located in the heart of the peaceful Algarvian countryside is this fully renovated property set out like a small hamlet of houses in bright happy colours. The main residence was formally the village 'picture house' and dance hall for locals on Saturday nights. Now a perfect business opportunity for holiday rentals or for a large family home.

Main House (ground floor only):

- Large open plan living room/kitchen
- Library room
- Laundry
- Hallway



Areas +

Living Area	332 m ²
Usable area	332 m ²
Plot Area	780 m ²

Access +

Tarmac

Parking +

Private Parking

Living Room +

Lounge/Dining

Kitchen +

Own Entrance, Open Plan, Kitchen/Dining, Fully Fitted, Modern, Terrace

Other Rooms +

Storage, Laundry, Mezzanine, 4 Annexes

Bedroom +

3 on Ground Floor, En-Suite, Countryside View

Water-Electricity-Drainage +

Mains electric, Gas Bottle, Cistern, Septic tanks

Windows +

Double glazing, UVA Protection

Pool +

Private, Plunge pool

Views +

Countryside View, Panoramic View, Wide Open Views

- 2 bedrooms en-suite
- 1 bedroom
- 1 bathroom
- 1 W.C

Annex 1:

- Living room/kitchenette
- Bedroom
- Bathroom
- Terrace

Annex 2:

- Ground floor: living room/kitchenette
- First floor: bedroom & bathroom

Annex 3:

- Ground floor: living room
- First floor: bedroom & bathroom

Annex 4:

- Ground floor studio with bathroom and large terrace

Outside:

- Plunge Pool
- 40,000 litre restored cisterna
- Parking
- Storage shed
- South orientation

Amenities

- Partly furnished
- Replacement double glazed windows

Location

- 44.4 km to airport
- 3.5 km to Alte village
- 8.3 km to Paderne town

Other Info

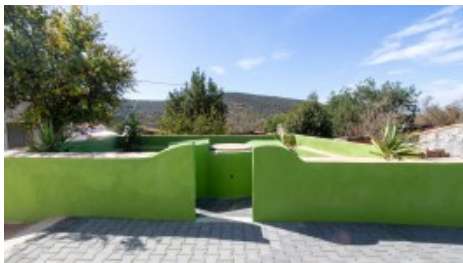
This unspoiled area of the Algarve has lots of orange groves and is a known area for cycling, horse riding and walking routes with lots of safe country lanes.



PHOTO GALLERY



Pool



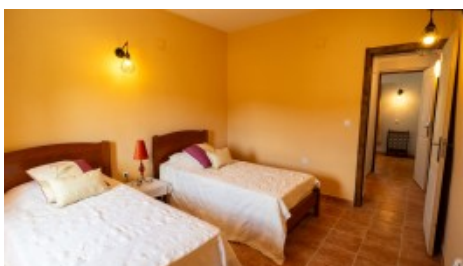
Cisterna & Views



Main House Lounge



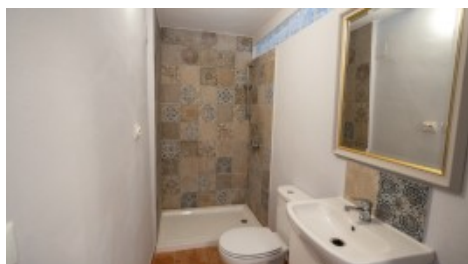
Main House Kitchen



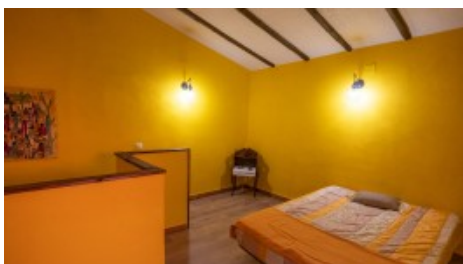
Main House Bedroom



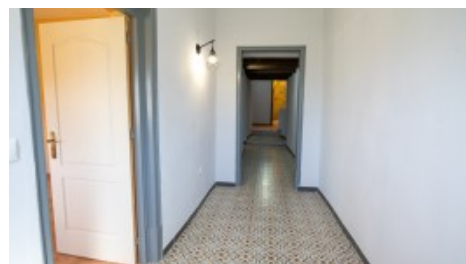
Bedroom View



Main House Family Bathroom



Main House Bedroom



Main House Hall



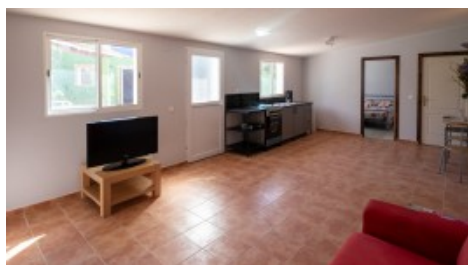
Courtyard



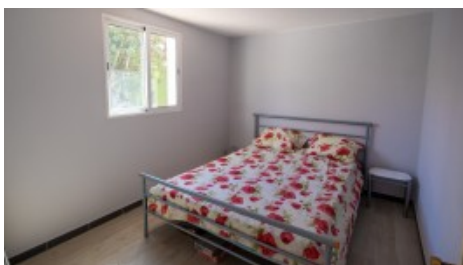
Main House Terrace View



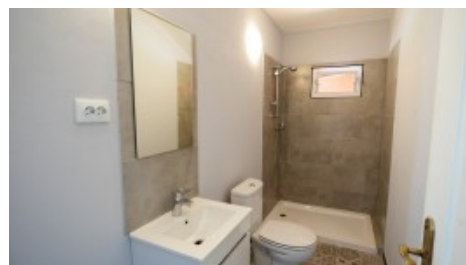
Cottage 1



Cottage 1 Living Room



Cottage 1 Bedroom



Cottage 1 Bathroom



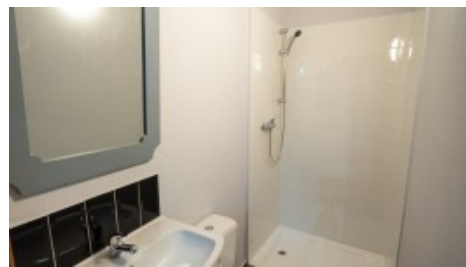
YOUR PROPERTY SPECIALISTS



Terrace



Cottage 2 Living Room



Cottage 2 Bathroom



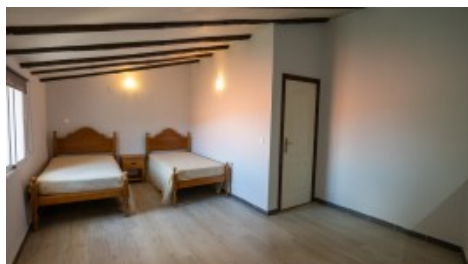
Cottage 3 Living Room



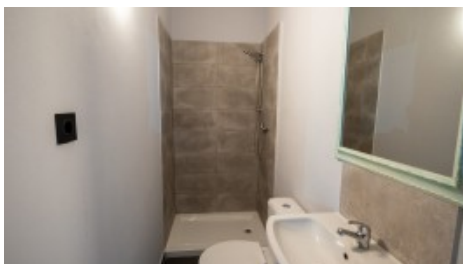
Cottage 3 Bedroom



Cottage 3 Kitchenette



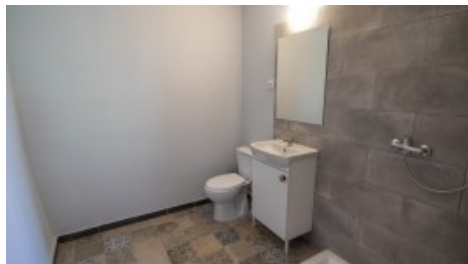
Cottage 3 Bedroom



Cottage 3 Bathroom



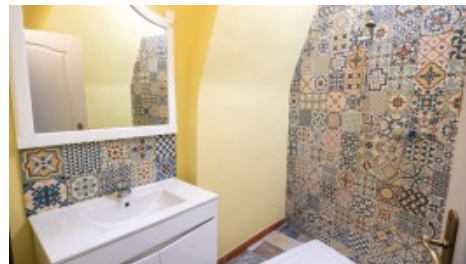
Cottage 4 Living



Cottage 4 Bathroom



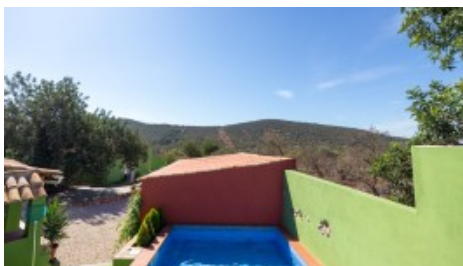
Main House Library



Guest WC



Pool



Pool & Views



Main House



Vilamoura Head Office - ALGARVE:
Av. Vilamoura XXI, Sítio das Terras Ruivas, Loja B, Benfarras
GPS. 37° 6' 52.426" N - 8° 7' 4.576" W

Togofor Homes - Sociedade Mediação Imobiliária, LDA | License: AMI 6902

+351 289 322 134
enquiries@togofor-homes.com
www.togofor-homes.com