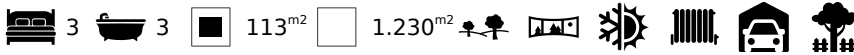




Beautiful 3 Bedroom Detached Country House in Benfarras, Vilamoura

VILLA IN BOLIQUEIME

ref. VM2292
950.000€



Location +

Town	Boliqueime
Parish	Boliqueime
Municipality	Loulé, Faro
Region	Algarve (Central)

Details +

Usage	Residential
Type	Villa
Construction Year	2001
Rooms	5
Bedrooms	3
Bathrooms	3
Floors	2
Furnished	Fully

- Living area 113m², construction area 247m²
- Plot 1230m²
- 3 Bedrooms, 3 bathrooms, 1 en-suite
- Year of construction 2001
- Distance from the beach 8 km

This is an authentic Portuguese style 3-bedroom country house in Benfarras, a quaint village nestled in the Algarve, renowned for its serene ambiance and landscapes. The village is very traditional, with cobbled streets and charming cafes and artisan shops.

The property consists of:

Ground Floor:

- Large entrance hall
- Dining room/lounge
- Modern fully fitted kitchen
- Master bedroom
- Bathroom
- Garage
- Large storage room

First Floor:



Areas +

Living Area	113 m ²
Usable area	247 m ²
Plot Area	1.230 m ²

Access +

Country Road, Driveway, Steep Access

Parking +

Garage, Double Garage, Driveway

Living Room +

Lounge/Dining

Terrace +

Terraces

Kitchen +

Own Entrance, Open Plan, Kitchen/Dining, Fully Fitted, Modern

Other Rooms +

Other Rooms 1	Laundry, Pantry
Other Rooms 2	Basement, 1 Bedroom, 1 Bathroom, Lounge, Fully Fitted Kitchen

Bedroom +

3, En-Suite, Fitted Wardrobe

Bathroom +

Family Bathroom, Guest Toilet

Heating-Cooling System +

Central Heating, Log/wood burner, AC

Equipment +

Boiler, Solar (Water)

Water-Electricity-Drainage +

All mains, Cistern, Borehole, Gas Bottle

Windows +

- Large entrance hall
- Dining room/lounge
- Modern fully fitted kitchen
- Master bedroom (en-suite)
- Double bedroom
- Bathroom

External:

- Large open terrace with dining area
- BBQ area
- Two electric gate entrances
- Outdoor parking
- Fully fenced
- 25 assorted fruit trees
- Storage room

Amenities

- 3 solar panels
- Mains water/sewage
- Mains electric
- 60,000 litres cistern borehole
- Mains gas

Location

- 8.7 km to the sea
- 8 km to the beach
- 5.4 km to nearest golf course (Dom Pedro)
- 12 km to nearest school
- 30 km to Faro airport
- 4 km to nearest town (Boliqueime)



YOUR PROPERTY SPECIALISTS

Double glazing

Garden +

Landscaped, Auto irrigation, Lawn,
Fruit Trees

Exterior +

BBQ

Views +

Panoramic View, Countryside View



Vilamoura Head Office - ALGARVE:
Av. Vilamoura XXI, Sítio das Terras Ruivas, Loja B, Benfarras
GPS. 37° 6' 52.426" N - 8° 7' 4.576" W

Togofor Homes - Sociedade Mediação Imobiliária, LDA | License: AMI 6902

+351 289 322 134
enquiries@togofor-homes.com
www.togofor-homes.com



PHOTO GALLERY



Kitchen



Garden



Master Bedroom



En-Suite



Terrace



Bedroom



Guest WC



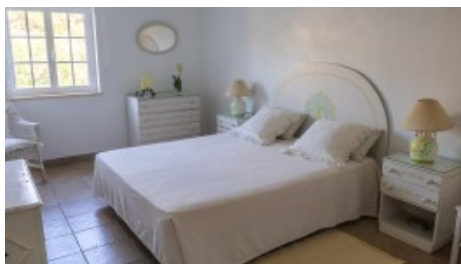
Terrace



Side of property



Basement - Kitchen



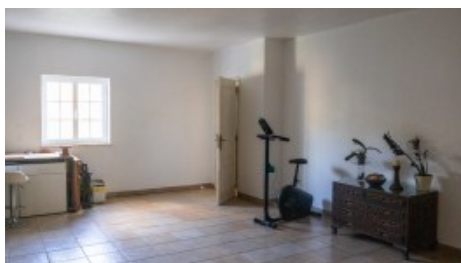
Basement - Bedroom



Basement - Bathroom



Front of property



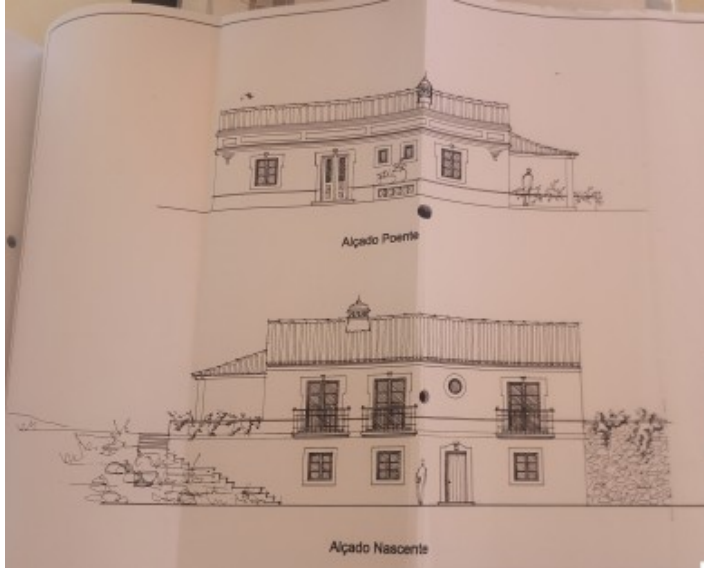
Garage



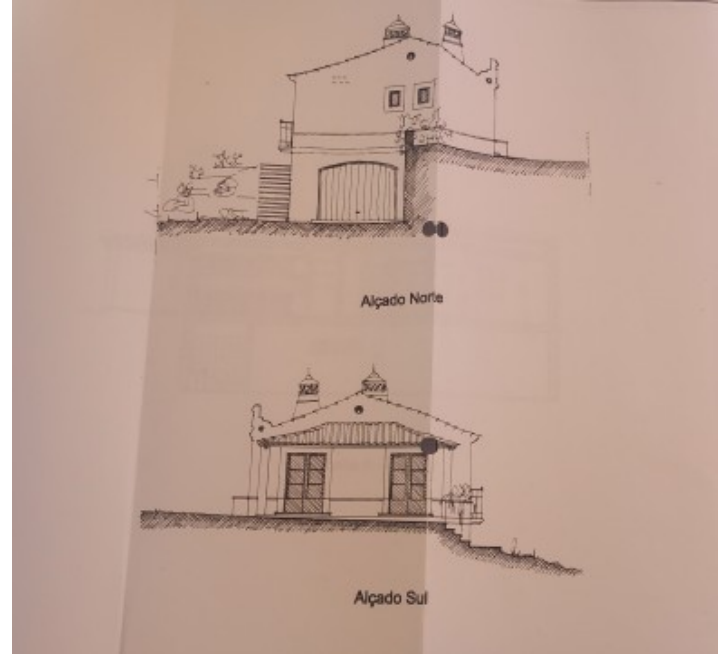
Driveway



FLOOR PLANS



VM2292 Floor plans 1



VM2292 Floor plans 2