



2 Bedroom Apartment within 400m of beach, in Quarteira, Central Algarve

APARTMENT IN QUARTEIRA

ref. VM2301
310.000€



Location +

Town	Quarteira
Parish	Quarteira
Municipality	Loulé, Faro
Region	Algarve (Central)

Details +

Usage	Residential
Type	Apartment
Construction Year	2006
Rooms	4
Bedrooms	2
Bathrooms	1
Furnished	Partly

- Living area: 78 m²
- Construction year: 2006
- 2 bedrooms, 1 bathroom
- Outdoor parking and garage space
- Energy rating C
- 400m from Beach

This two-bedroom, apartment is ideally located in a quiet part of Quarteira, a short walk to the beach and all other amenities of the town.

Ideal as a holiday apartment and/or rental investment.

- Living/dining room and kitchen
- 2 Bedrooms and separate office
- Garage and outdoor parking

Amenities

- Equipped kitchen



YOUR PROPERTY SPECIALISTS

Areas +

Living Area 78 m²
Usable area 115 m²

- Mains electricity, water and drainage
- Furnished
- Bathroom with bathtub and shower
- Walking distance to beach and all amenities

Access +

Tarmac, Easy Access, Turning Space

Parking +

Underground Garage, Parking outdoors

Living Room +

Lounge/Dining, Old Tiles

Kitchen +

Partly fitted, Gas Hob, Electric Oven, Extractor, Fridge/Freezer, Washing Machine, Water Heater

Other Rooms +

Office/Study

Bedroom +

2 Bedrooms

Bathroom +

1 Family Bathroom

Equipment +

Satellite/Internet TV, Internet/Phone, Intercom, Lift

Water-Electricity-Drainage +

Mains water, Mains electric, Mains drainage, Mains Gas

Windows +

Single Glazing, Manual Shutters/Blinds

Garden +

Communal gardens, Outdoor lighting

Exterior +

Courtyard

Location

- Nearest Beach: 400 m
- Nearest Golf: 5 km (Vila Sol and Vale do Lobo)
- Centre of Quarteira
- Faro International Airport: 24 km



Vilamoura Head Office - ALGARVE:
Av. Vilamoura XXI, Sítio das Terras Ruivas, Loja B, Benfarras
GPS. 37° 6' 52.426" N - 8° 7' 4.576" W

Togofor Homes - Sociedade Mediação Imobiliária, LDA | License: AMI 6902

+351 289 322 134
enquiries@togofor-homes.com
www.togofor-homes.com



PHOTO GALLERY



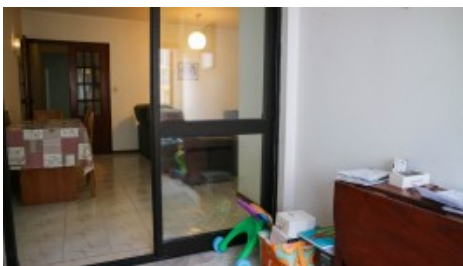
Kitchen



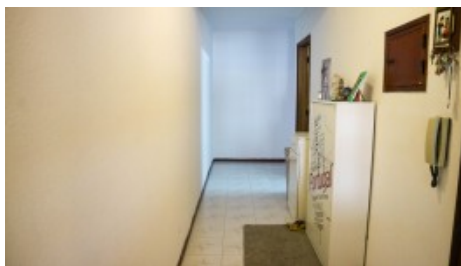
Bedroom 2



Living/Dining



Office



Corridor



Bathroom



Parking



Distance to Beach



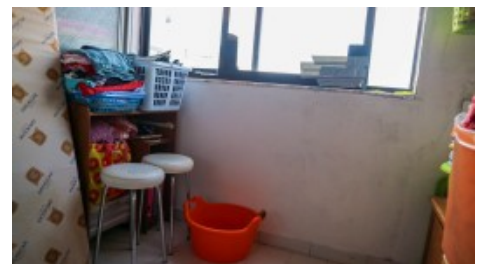
Entrance



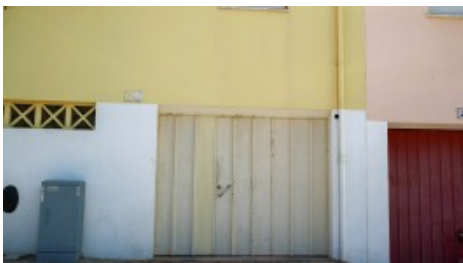
Courtyard



View



Storage Room



Garage



Garage